



Parts Manual

Onan Generator Set for Hydraulic

RBAB 6kW (Spec A–G)

RBAB 8kW (Spec A–G)

RBAB 10kW (Spec A–G)

RBAB 15kW (Spec A–G)

Introduction

This parts catalog applies to the standard generator sets listed below. Parts are arranged in groups of related items and each illustrated part is defined by a reference number corresponding to the same reference number in the parts list. Parts illustrations are typical. Using the model and specification number from your generator set nameplate, select parts that apply to your set. Right and left sides are determined by facing the generator end (front) of the set.

Current Product Structure Generator Set Data Table Spec A-D

Model Identification	Output Power	Frequency	Voltage
6RBAB-2010D	6 kW	60 Hz	120/240 V
8RBAB-2010D	8 kW	60 Hz	120/240 V
8RBAB-50-2010D	8 kW	50 Hz	115/230 V
10RBAB-2010D	10 kW	60 Hz	120/240 V
15RBAB-2010D	15 kW	60 Hz	120/240 V

Current Product Structure Generator Set Data Table Begin Spec F

Model Identification	Output Power	Frequency	Voltage
6RBAB-2010F	6 kW	60 Hz	120/240 V
8RBAB-2010F	8 kW	60 Hz	120/240 V
10RBAB-2010F	10 kW	60 Hz	120/240 V
15RBAB-2010F	15 kW	60 Hz	120/240 V

Hydraulic Pump Table Generator Spec A-C

Pump Identification	Pump Shaft	Shaft Direction
HPUMP2-CWK-A	1" Keyed	CW
HPUMP5-CCWK-A	1" Keyed	CCW
HPUMP3-CW13-A	13T Splined	CW
HPUMP6-CCW13-A	13T Splined	CCW
HPUMP1-CW15-A	15T Splined	CW
HPUMP4-CCWK-A	15T Splined	CCW

Hydraulic Pump Table Begin Generator Spec D

Pump Identification	Pump Shaft	Shaft Direction	Shaft Seal
PUMP-RBAB-10R15S	15 T Splined	CW	Single
PUMP-RBAB-15R15S	15 T Splined	CW	Single
PUMP-RBAB-10R1KS	1" Keyed	CW	Single
PUMP-RBAB-15R1KS	1" Keyed	CW	Single
PUMP-RBAB-10L15S	15 T Splined	CCW	Single
PUMP-RBAB-10L15S	15 T Splined	CCW	Single
PUMP-RBAB-10L1KS	1" Keyed	CCW	Single
PUMP-RBAB-15L1KS	1" Keyed	CCW	Single
PUMP-RBAB-10R13S	13 T Spline	CW	Single
PUMP-RBAB-10L13S	13 T Spline	CCW	Single
PUMP-RBAB-10R15D	15 T Spline	CW	Dual
PUMP-RBAB-15R15D	15 T Spline	CW	Dual
PUMP-RBAB-10R13D	13 T Spline	CW	Dual

Legacy Product Structure Generator Set Data Table

Model Identification	Pump Shaft	Wiring Diagram	Voltage	Shaft Direction	Hz
6RBAB5949A/B	15T Splined	625-4772	120/240	CW	60
6RBAB5950A/B	1" Keyed	625-4772	120/240	CW	60
6RBAB5951A/B	15T Splined	625-4772	120/240	CCW	60
6RBAB5952A/B	1" Keyed	625-4772	120/240	CCW	60
6RBAB5953A/B	13T Splined	625-4772	120/240	CW	60
6RBAB6624B	13T Splined	625-5013	120/240	CCW	60
8RBAB5954A/B	15T Splined	625-4772	120/240	CW	60
8RBAB5955A/B	15T Splined	625-4772	120/240	CW	60
8RBAB5956A/B	15T Splined	625-4772	120/240	CCW	60
8RBAB5957A/B	1" Keyed	625-4772	120/240	CCW	60
8RBAB5958A/B	13T Splined	625-4772	120/240	CW	60
8RBAB505969A/B	15T Splined	625-4772	115/230	CW	50
8RBAB505970A/B	1" Keyed	625-4772	115/230	CW	50
8RBAB505971A/B	15T Splined	625-4772	115/230	CCW	50
8RBAB505972A/B	1" Keyed	625-4772	115/230	CCW	50
8RBAB505973A/B	13T Splined	625-4772	115/230	CW	50
8RBAB6625B	13T Splined	625-5013	120/240	CCW	60
10RBAB5959A/B	15T Splined	625-4772	120/240	CW	60
10RBAB5960A/B	1" Keyed	625-4772	120/240	CW	60
10RBAB5961A/B	15T Splined	625-4772	120/240	CCW	60
10RBAB5962A/B	1" Keyed	625-4772	120/240	CCW	60
10RBAB5963A/B	13T Splined	625-4772	120/240	CW	60
10RBAB6626B	13T Splined	625-5013	120/240	CCW	60
15RBAB5964A/B	15T Splined	625-4772	120/240	CW	60
15RBAB5965A/B	1" Keyed	625-4772	120/240	CW	60
15RBAB5966A/B	15T Splined	625-4772	120/240	CCW	60
15RBAB5967A/B	1" Keyed	625-4772	120/240	CCW	60
15RBAB5968A/B	13T Splined	625-4772	120/240	CW	60

* – The specification number denotes customer requested options or deviations from a standard (1A, 1B, etc.) model. The specification letter advances (A, to B, to C, etc.) with major manufacturing changes.

This Page Intentionally Left Blank.

Index

A

Adapter, Alternator, **19**
Adapter, Generator, **13 , 14 , 15 , 16 , 19**
Adapter, Hose, **11 , 32**
Adapter, Tube, **9 , 11**

B

Baffle, Air, **28**
Base, Drip Pan, **28**
Base, Drip Pan (6, 8, 10 and 15kW), **28**
Base, Relay, **20**
Base, Relay , **23**
Block Assy, Brush, **14 , 15 , 16 , 19**
Block, Brush, **13 , 14 , 15 , 16 , 19**
Block, Terminal (15kW), **23 , 24**
Block, Terminal (6, 8 and 10kW), **20 , 21**
Bracket, Regulator (15kW), **24**
Bracket, Regulator (6, 8 and 10kW), **21**
Bracket, Transformer, **20 , 21 , 23 , 24**
Bracket, Voltage Regulator (15kW), **23 , 24**
Bracket, Voltage Regulator (6, 8 and 10kW), **20 , 21**
Breather, Reservoir (Cover), **33**
Breather, Reservoir (Element), **33**
Brush, Generator, **13 , 14 , 15 , 16 , 19**
Bushing, Strain Relief (6 and 8kW), **22**

C

Clip, **21 , 24**
Conduit, Liquid Tight (15kW), **25**
Conduit, Liquidtight, **22**
Connector, Conduit, **22**
Control (15kW), **23 , 24**
Control (6, 8 10 and 8kW 50Hz), **20 , 21**
Cover, Access (15kW), **27**
Cover, Control, **22**
Cover, Control (15kW), **25**
Cover, Enclosure, **26**
Cover, Enclosure (15kW), **30**
Cover, Enclosure (6, 8 and 10kW), **29**

Cover, Generator Enclosure (15kW), **27**

E

Elbow, Tube, **9**
Enclosure, Generator (15kW), **27**
Enclosure, Generator (6, 8 and 10kW), **26**
Endbell, Generator, **13 , 14 , 15 , 16 , 19**
Exchanger, Hydraulic Heat (15kW), **30 , 30**
Exchanger, Hydraulic Heat (6, 8 and 10kW), **29**
Exchanger, Hydraulic Heat (6, 8kW Spec C and 10kW), **29**
Eye, Lifting, **13 , 14 , 15 , 16 , 19**

F

Fan, Nylon Generator, **13 , 14 , 15 , 16 , 19**
Fan, Steel Generator, **13 , 14 , 15 , 16 , 19**
Filter Assy, Hydraulic, **33**
Filter, Hydraulic, **33**
Fitting, Tube Union, **11**
Foot, Generator Mounting, **13 , 14 , 15 , 16 , 19**

G

Gasket, Hydraulic Reservoir, **33**
Gauge, Level, **32**
Gauge, Pressure, **32**
Generator, **19**
Generator (10kW), **15**
Generator (15kW), **16 , 18**
Generator (6 and 8kW), **13**
Generator (8kW 50hZ), **14**
Generator Begin Spec E, **19**
Grommet, **13 , 14 , 15 , 16 , 19 , 23 , 24**
Grommet, Remote, **29**
Grommet, Remote (15kW), **30**
Guard, Generator Fan (15kW), **27**
Guard, Generator Fan (6, 8 and 10kW), **26**

H

Harness, AC Sensor, **23 , 24**

Index

Harness, AC Sensor (J5), **35**
Harness, AC Sensor Extension, **37**
Harness, Meter, **37**
Harness, PCB, **35**
Harness, Regulator, **23 , 24**
Harness, Regulator (15kW), **35**
Harness, Regulator (P11), **35**
Harness, Sensor (J9 & P10), **37**
Harness, Switch (J1), **37**
Harness, Switch (P2), **37**
Harness, Valve (Extension) (P2 & P3), **37**
Harnesses, **34**
Hose, Extension, **31**
Hose, Oil, **9 , 11**
Hose, Oil (15kW), **30**
Hose, Oil (Hydraulic 6, 8, and 10kW), **29**
Hydraulic, Manifold, **9**

I

Insulation, Baffle (15kW), **30**
Insulation, Baffle (6, 8 and 10kW), **29**
Isolator, Vibration, **29**
Isolator, Vibration (15kW), **30**

K

Kits, **38**

L

Label, Ground, **38**
Label, Information, **38**
Label, Logo, **38**
Label, Package, **38**
Labels, **38**

M

Manifold, Oil Pressure, **12**
Meter, Multiple Function (Display), **38**
Motor Assy, Hydraulic, **31**
Motor, Hydraulic, **31**

Multi-Meter, **38**

O

O'Ring, Generator, **13 , 14 , 15 , 16 , 19**

P

Panel, Enclosure (15kW), **27**
Panel, Side (6, 8 and 10kW), **22**
Plug, Threaded, **12**
Pump Assy, Hydraulic (15kW), **9 , 11**
Pump, Hydraulic, **9 , 10 , 11**
Pump, Hydraulic (15kW), **9 , 11**

R

Regulator, Voltage (15kW), **23 , 24**
Regulator, Voltage (6, 8 and 10kW), **20 , 21**
Relay (15kW), **23 , 24**
Relay (6, 8 and 10kW), **20 , 21**
Relay, Base, **21 , 24**
Relief, Strain (15kW), **25**
Reservoir Assy, Hydraulic, **32**
Reservoir, Hydraulic, **32**
Resistor, 1K Ohm, **35**
Rotor Assy, **13 , 15 , 16**
Rotor Assy , **14**

S

Screw, Hex Flange Head, **19**
Screw, Socket Head, **19**
Scroll, Intake (15kW), **30**
Scroll, Intake (6, 8 and 10kW), **29**
Seal, Enclosure, **28**
Seal, Enclosure (15kW), **30**
Side Panel (15kW), **25**
Solenoid, **12**
Spring, Compression, **13 , 14 , 15 , 16 , 19**
Spring, Generator Brush, **13 , 14 , 15 , 16 , 19**
Stator, **13 , 14 , 15 , 16**
Strap, Bond, **22 , 25**

Index

Switch, Temperature, **29**
Switch, Temperature (15kW), **30**

T

Transformer, **20 , 21 , 23 , 24**
Tube, Union, **9**

V

Valve, Hydraulic, **12**

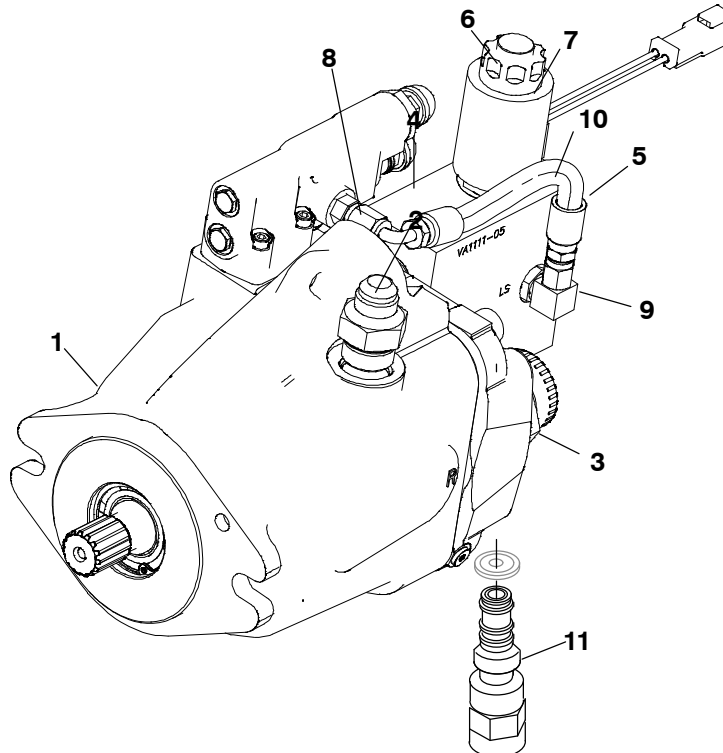
Valve, Hydraulic , **11**
Valve, Hydraulic (Directional), **9 , 11**

W

Washer, Flat, **19**

This Page Intentionally Left Blank.

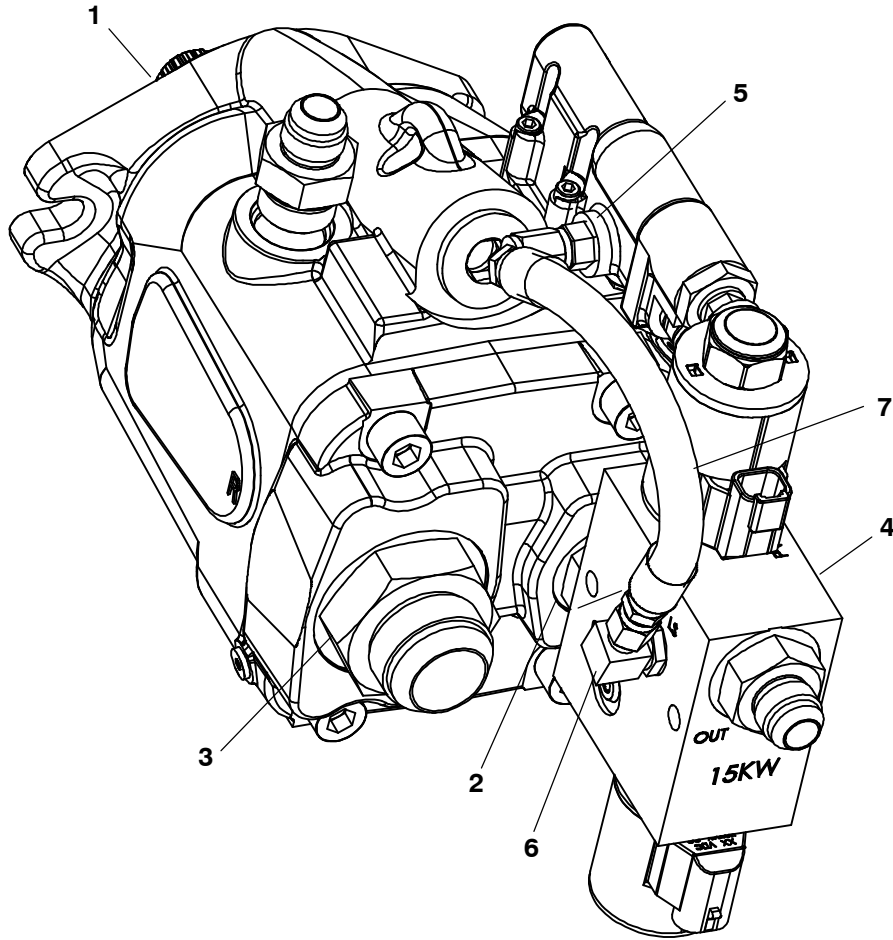
Hydraulic Pump (Spec A-C)



REF NO.	PART NO.	QTY USED	PART DESCRIPTION	REF NO.	PART NO.	QTY USED	PART DESCRIPTION
			Pump Assy, Hydraulic Spec A				Marked #)
A029Z329		1	6kW5949A/B, 8kW5954A/B 8kW505969A/B 10kW5959A/B, 15kW5964A/B (Assemblies Pump Marked *)		A029Z337	1	Spec B-C 6kW6624B, 8kW6625B 10kW6626B, (Assemblies Pump Marked -)
A029Z330		1	6kW5950A/B, 8kW5955A/B 8kW505970A/B 10kW5960A/B, 15kW5965A/B (Assemblies Pump Marked +)	1	121-0248-01	1	* 15 Tooth Splined CW
					121-0248-02	1	+ 1" Keyed CW
					121-0248-03	1	^ 15 Tooth Splined CCW
					121-0248-04	1	~ 1" Keyed CCW
					121-0248-05	1	# 13 Tooth Splined CW
					121-0248-06	1	- 13 Tooth Splined CCW
A029Z332		1	6kW5951A/B, 8kW5956A/B 8kW505971A/B 10kW5961A/B, 15kW5966A/B (Assemblies Pump Marked ^)	2	502-1543	1	Tube, Union
				3	502-1542	1	Adapter
				4	121-0251	1	Hydraulic, Manifold
				5	502-1446	2	Adapter, Hose
				6	504-0275	1	Valve, Hydraulic
				7	504-0276	1	Valve, Hydraulic
A029Z334		1	6kW5952A/B, 8kW5957A/B 8kW505972A/B 10kW5962A/B, 1 15kW5967A/B (Assemblies Pump Marked ~)	8	502-1468	1	Adapter, Tube
				9	502-1412	1	Elbow, Tube
				10	503-2696	1	Hose, Oil
				11	504-0292	1	Valve, Hydraulic (Flow Compensator)
A029Z336		1	6kW5953A/B, 8kW5958A/B 8kW505973A/B 10kW5963A/B, (Assemblies Pump				

* All parts included in Hydraulic Pump Assembly.

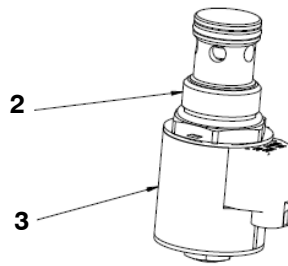
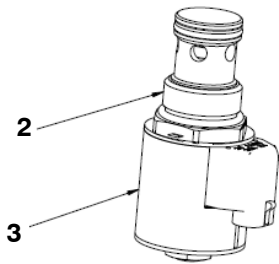
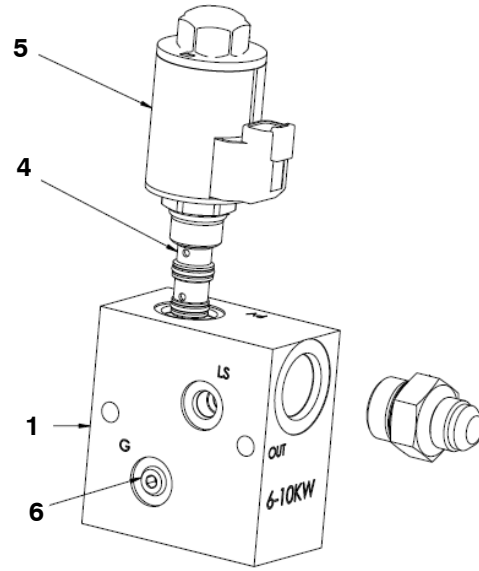
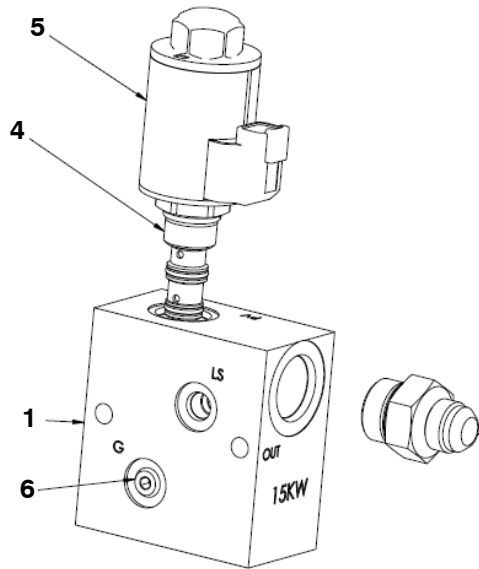
Hydraulic Pump (Begin Spec D)



Hydraulic Pump (Begin Spec D)

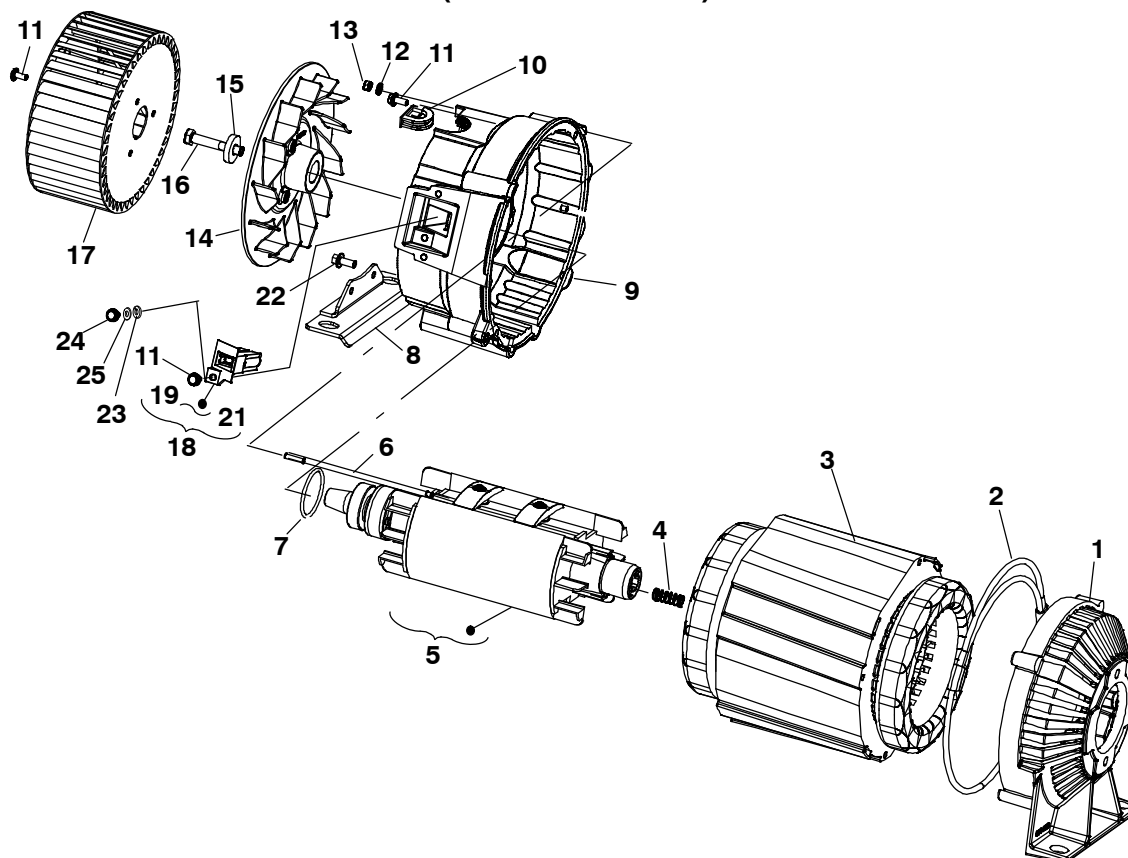
REF NO.	PART NO.	QTY USED	PART DESCRIPTION	REF NO.	PART NO.	QTY USED	PART DESCRIPTION
	A046W958	1	Pump Assembly, Hydraulic 6-10kW, CW, 15T, Single Seal (Assemblies Pump Marked *)		A046W964	1	6-10kW, CCW, 13T, Single Seal (Assemblies Pump Marked -)
	A048X036	1	15kW, CW, 15T, Single Seal (Assemblies Pump Marked *)		A048X044	1	6-10kW, CW, 15T, Dual Seal (Assemblies Pump Marked !)
	A046W960	1	6-10kW, CW, 1" Keyed, Single Seal (Assemblies Pump Marked +)		A048Z014	1	15kW, CW, 15T, Dual Seal (Assemblies Pump Marked !)
	A048X038	1	15kW, CW, 1" Keyed, Single Seal (Assemblies Pump Marked +)		A048Z016	1	6-10kW, CW, 13T, Dual Seal (Assemblies Pump Marked &)
	A046W961	1	6-10kW, CCW, 15T, Single Seal (Assemblies Pump Marked ^)	1			Pump, Hydraulic
	A048X040	1	15kW, CCW, 15T Single Seal (Assemblies Pump Marked ^)		A029X364	1	* 15 Tooth Splined, CW
	A046W962	1	6-10kW, CCW, 1" Keyed, Single Seal (Assemblies Pump Marked ~)		A029X365	1	+ 1" Keyed CW
	A048X042	1	15kW, CCW, 1" Keyed, Single Seal (Assemblies Pump Marked ~)		A029X366	1	^ 15 Tooth Splined, CCW
	A046W963	1	6-10kW, CW, 13T, Single Seal (Assemblies Pump Marked #)		A029X367	1	~ 1" Keyed CCW
					A029X368	1	# 13 Tooth Splined, CW
					A029X369	1	- 13 Tooth Splined, CCW
					A047J450	1	! 15 Tooth Splined, CW, Dual-Seal
					A047J451	1	& 13 Tooth Splined, CW Dual-Seal
				2	0502-1543	1	Fitting, Tube Union
				3	0502-1542	1	Adapter, Hose
				4			Valve, Hydraulic
					A048W530	1	(6/8/10kW)
					A046L271	1	(15kW)
				5	0502-1468	1	Adapter, Tube
				6	0502-1412	1	Elbow, 90 Degree Tube
				7	A029S283	1	Hose, Oil

Hydraulic Valve Begin Spec D



REF NO.	PART NO.	QTY USED	PART DESCRIPTION	REF NO.	PART NO.	QTY USED	PART DESCRIPTION
1	A050D699	1	Manifold, Oil Pressure (6/8/10kW)	3	A046L266	1	Solenoid
	A050D701	1	(15kW)	4	A046L260	1	Valve, Hydraulic
2	A046L262	1	Valve, Hydraulic	5	A046L264	1	Solenoid
				6	A046P566	3	Plug, Threaded

Generator Spec A-F (6 and 8 kW 60Hz)

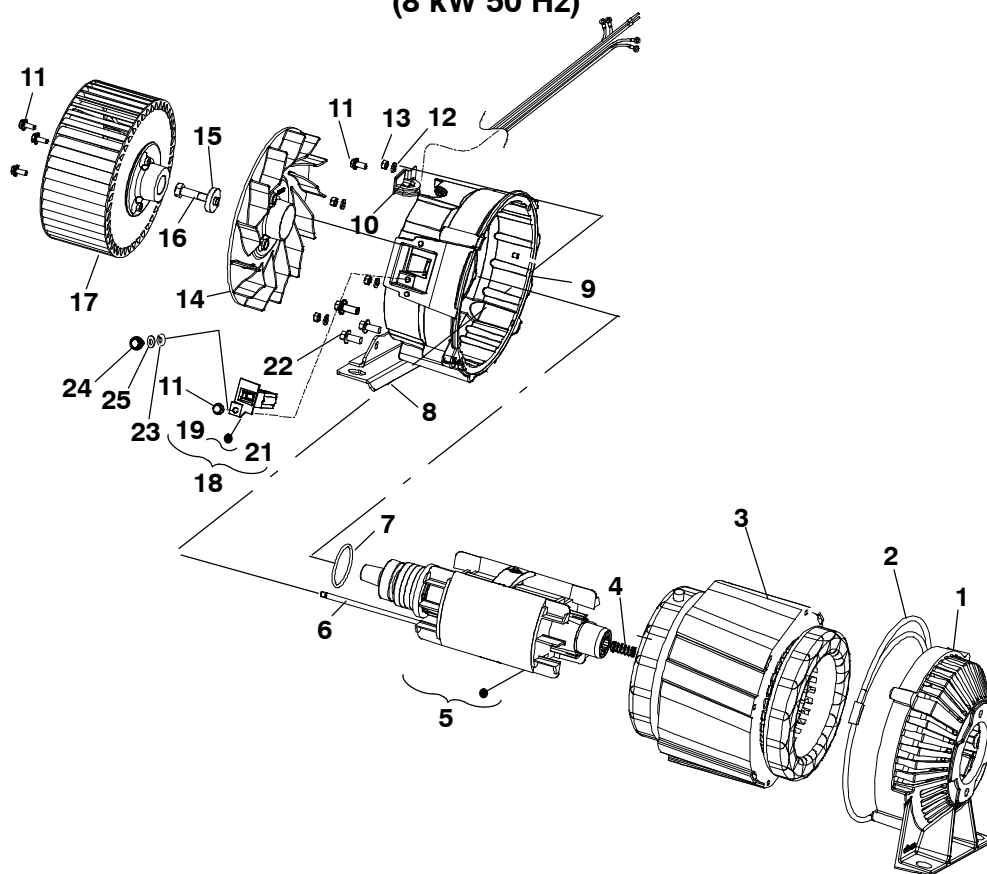


REF NO.	PART NO.	QTY USED	PART DESCRIPTION	REF NO.	PART NO.	QTY USED	PART DESCRIPTION
1	231-0406	1	Adapter, Generator	16	800-2091	1	Screw, Hex Head
2	403-4705	1	Eye, Lifting	17	130-5611	1	Fan, Steel Generator
3	220-4633-01	1	Stator	18	212-1303	1	Block Assy, Brush (Includes Parts Marked *)
4	506-0008	1	Spring, Compression	19	212-1276-03	1	*Spring, Generator Brush
5	201-3611-01	1	Rotor Assy (Includes Parts Marked +)	20	214-0109	2	*Brush, Generator
6	520-1032	4	Stud (M6 x 1 x 168mm)	21	212-1304	1	*Block, Brush
7	509-0420	1	+ O'Ring, Generator	22	815-0829-04	2	Screw, Hex Washer Head (M8 x 1.25 x 16mm)
8	232-4117-02	1	Foot, Generator Mounting	23	518-0394	1	#Clip
9	211-0521	1	Endbell, Generator	24	815-0941-03	1	#Screw
10	508-1265	1	Grommet	25	526-0016	1	#Washer
11	815-0753	5	Screw, Lock Flanged (M6 x 1 x 14mm)				
12	526-2080	4	Washer, Flat				
13	860-2007	4	Nut, Hex Head (M6 x 1mm)				
14	205-0300	1	Fan, Nylon Generator				
15	526-0077	1	Washer, Flat (1.25 OD x 15/32 ID)				

* - Parts Included in Brush Block Assy.
+ - Parts Included in Rotor Assy
- Parts not Included in Brush Block Assy (Replacement Parts)

Note- Rotor and Stator parts for Spec A-D are now only available to order as combined generator part A053T946.

Generator Spec A-D (8 kW 50 Hz)

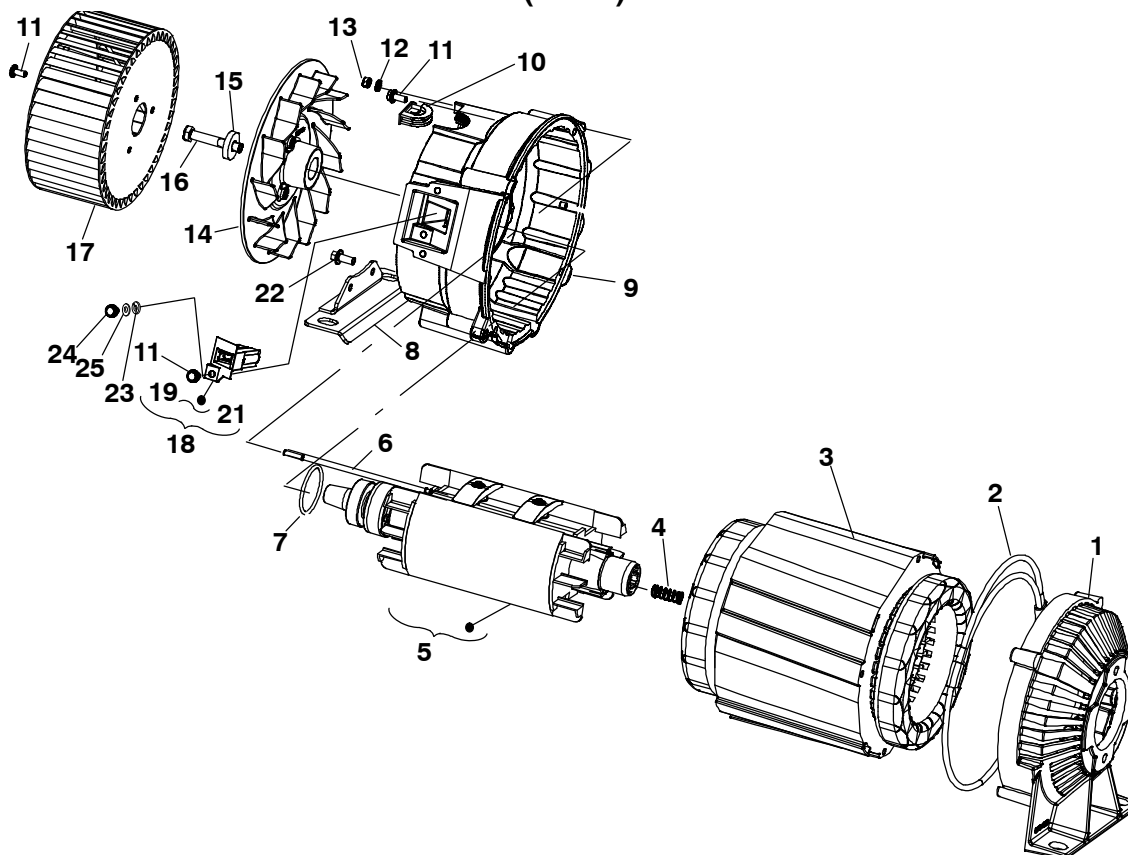


REF NO.	PART NO.	QTY USED	PART DESCRIPTION	REF NO.	PART NO.	QTY USED	PART DESCRIPTION
1	231-0406	1	Adapter, Generator	16	800-2091	1	Screw, Hex Head
2	403-4705	1	Eye, Lifting	17	130-5611	1	Fan, Steel Generator
3	220-4633-04	1	Stator	18	212-1303	1	Block Assy, Brush (Includes Parts Marked *)
4	506-0008	1	Spring, Compression	19	212-1276-03	1	*Spring, Generator Brush
5	201-3611-02	1	Rotor Assy (Includes Parts Marked +)	20	214-0109	1	*Brush, Generator
6	520-2642-02	4	Stud (M6 x 1 x 202mm)	21	212-1304	1	*Block, Brush
7	509-0420	1	+ O'Ring, Generator	22	815-0709-01	2	Screw, Hex Head Flanged (M8 x 1.25 x 18mm)
8	232-4117-02	1	Foot, Generator Mounting	23	518-0394	1	#Clip
9	211-0521	1	Endbell, Generator	24	815-0941-03	1	#Screw
10	508-1265	1	Grommet	25	526-0016	1	#Washer
11	815-0753	5	Screw, Lock Flanged (M6 x 1 x 14mm)				
12	526-2080	4	Washer, Flat				
13	860-2007	4	Nut, Hex Head (M6 x 1mm)				
14	205-0300	1	Fan, Nylon Generator				
15	526-0077	1	Washer, Flat (1.25 OD x 15/32 ID)				

* - Parts Included in Brush Block Assy.
+ - Parts Included in Rotor Assy
- Parts not Included in Brush Block Assy (Replacement Parts)

Note- Rotor and Stator parts for Spec A-D are now only available to order as combined generator part A053T946.

Generator Spec A-F (10kW)

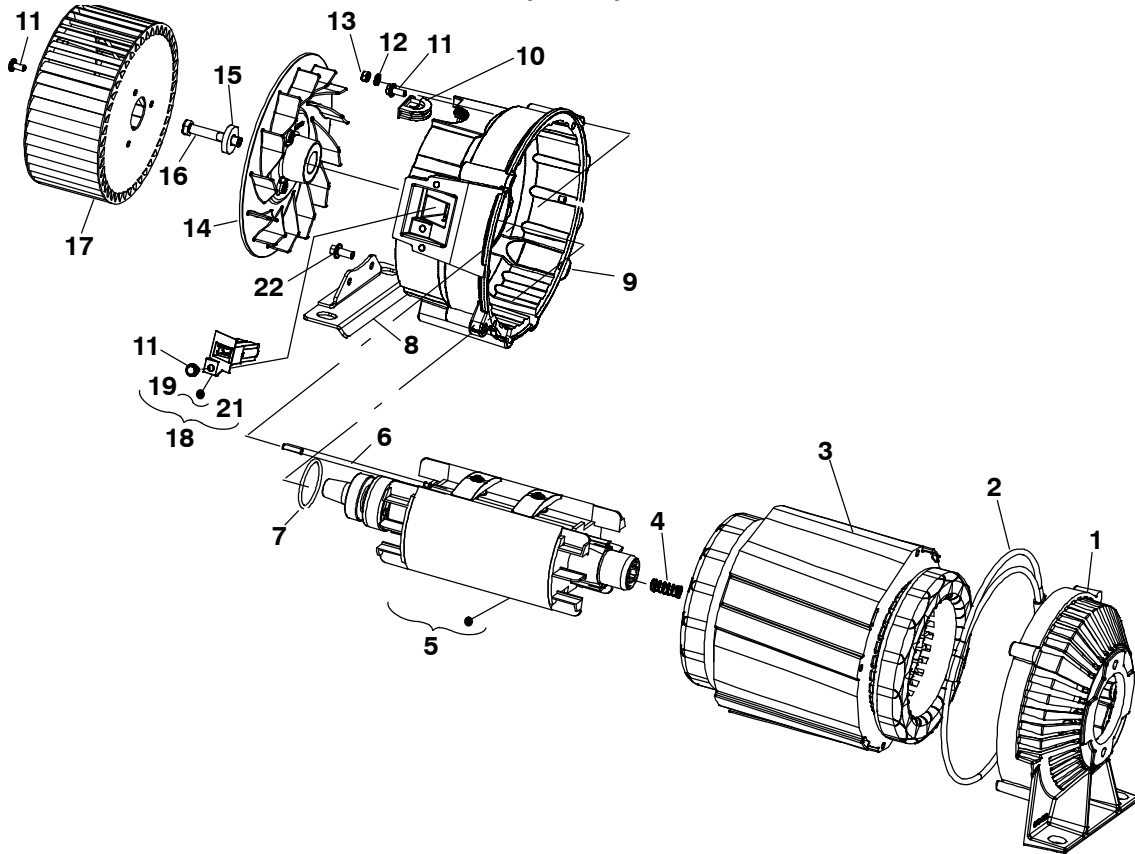


REF NO.	PART NO.	QTY USED	PART DESCRIPTION	REF NO.	PART NO.	QTY USED	PART DESCRIPTION
1	231-0406	1	Adapter, Generator	16	800-2091	1	Screw, Hex Head
2	403-4705	1	Eye, Lifting	17	130-5611	1	Fan, Steel Generator
3	220-4633-03	1	Stator	18	212-1303	1	Block Assy, Brush (Includes Parts Marked *)
4	506-0008	1	Spring, Compression	19	212-1276-03	1	*Spring, Generator Brush
5	201-3611-02	1	Rotor Assy (Includes Parts Marked +)	20	214-0109	1	*Brush, Generator
6	520-2642-02	4	Stud (M6 x 1 x 223mm)	21	212-1304	1	*Block, Brush
7	509-0420	1	+ O'Ring, Generator	22	815-0709-01	2	Screw, Hex Head Flanged (M8 x 1.25 x 18mm)
8	232-4117-02	1	Foot, Generator Mounting	23	518-0394	1	#Clip
9	211-0521	1	Endbell, Generator	24	815-0941-03	1	#Screw
10	508-1265	1	Grommet	25	526-0016	1	#Washer
11	815-0753	5	Screw, Lock Flanged (M6 x 1 x 14mm)				
12	526-2080	4	Washer, Flat				
13	860-2007	4	Nut, Hex Head (M6 x 1mm)				
14	205-0300	1	Fan, Nylon Generator				
15	526-0077	1	Washer, Flat (1.25 OD x 15/32 ID)				

* - Parts Included in Brush Block Assy.
+ - Parts Included in Rotor Assy
- Parts not Included in Brush Block Assy (Replacement Parts)

Note- Rotor and Stator parts for Spec A-D are now only available to order as combined generator part A053R212.

Generator Spec A-F (15kW)

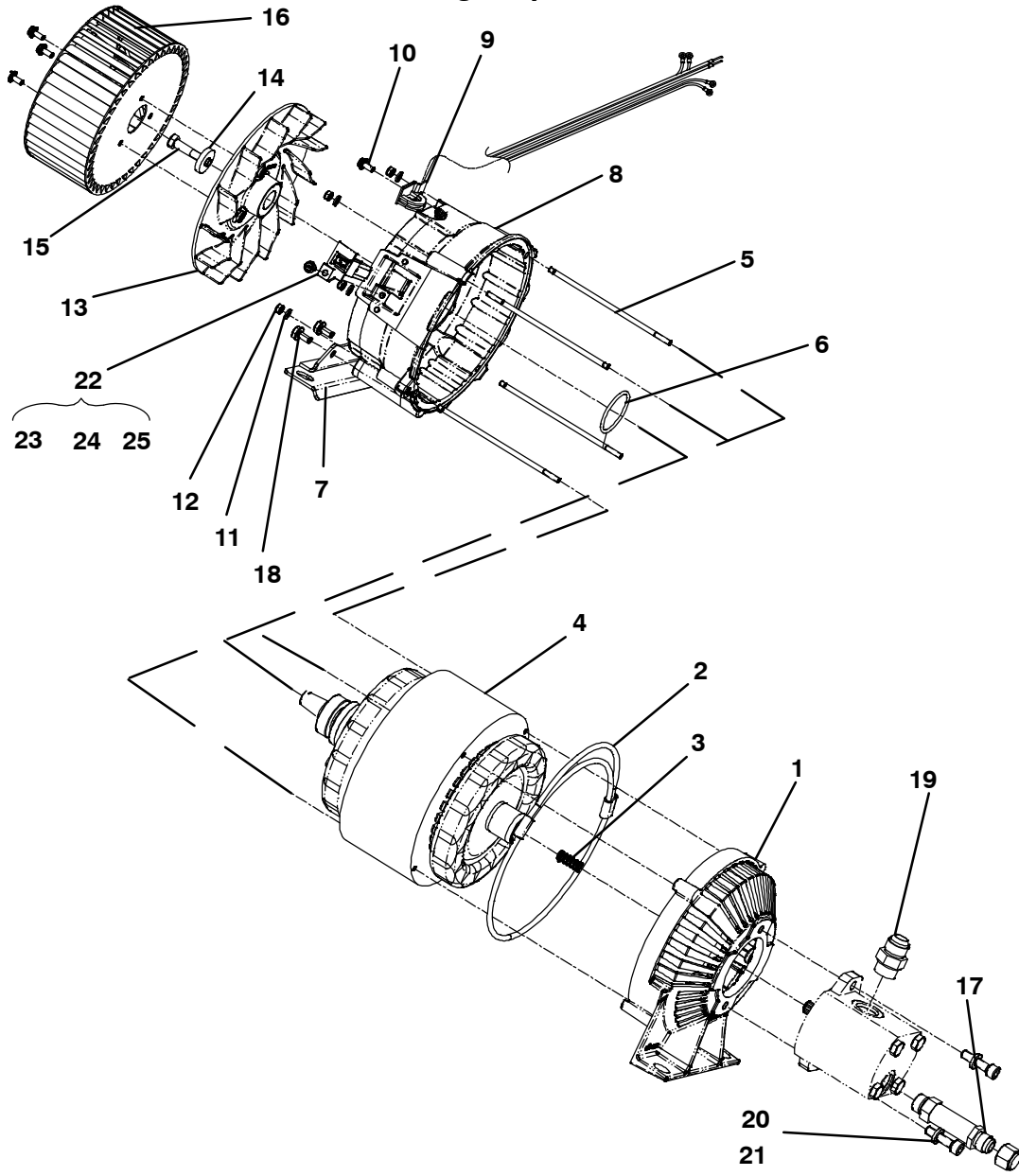


REF NO.	PART NO.	QTY USED	PART DESCRIPTION	REF NO.	PART NO.	QTY USED	PART DESCRIPTION
1	231-0406	1	Adapter, Generator	15	526-0077	1	Washer, Flat (1.25 OD x 15/32 ID)
2	403-4705	1	Eye, Lifting	16	800-2091	1	Screw, Hex Head
3	220-4633-02	1	Stator	17	130-5611	1	Fan, Steel Generator
4	506-0008	1	Spring, Compression	18	212-1303	1	Block Assy, Brush (Includes Parts Marked *)
5	201-3611-03	1	Rotor Assy (Includes Parts Marked +)	19	212-1276-03	1	*Spring, Generator Brush
6	520-2642-03	4	Stud (M6 x 1 x 223mm)	20	214-0109	1	*Brush, Generator
7	509-0420	1	+ O'Ring, Generator	21	212-1304	1	*Block, Brush
8	232-4117-02	1	Foot, Generator Mounting	22	815-0709-01	2	Screw, Hex Head Flanged (M8 x 1.25 x 18mm)
9	211-0521	1	Endbell, Generator				
10	508-1265	1	Grommet				
11	815-0753	5	Screw, Lock Flanged (M6 x 1 x 14mm)				
12	526-2080	4	Washer, Flat				
13	860-2007	4	Nut, Hex Head (M6 x 1mm)				
14	205-0300	1	Fan, Nylon Generator				
							* - Parts Included in Brush Block Assy.
							+ - Parts Included in Rotor Assy

Note- Rotor and Stator parts for Spec A-D are now only available to order as combined generator part A053T958.

This Page Intentionally Left Blank.

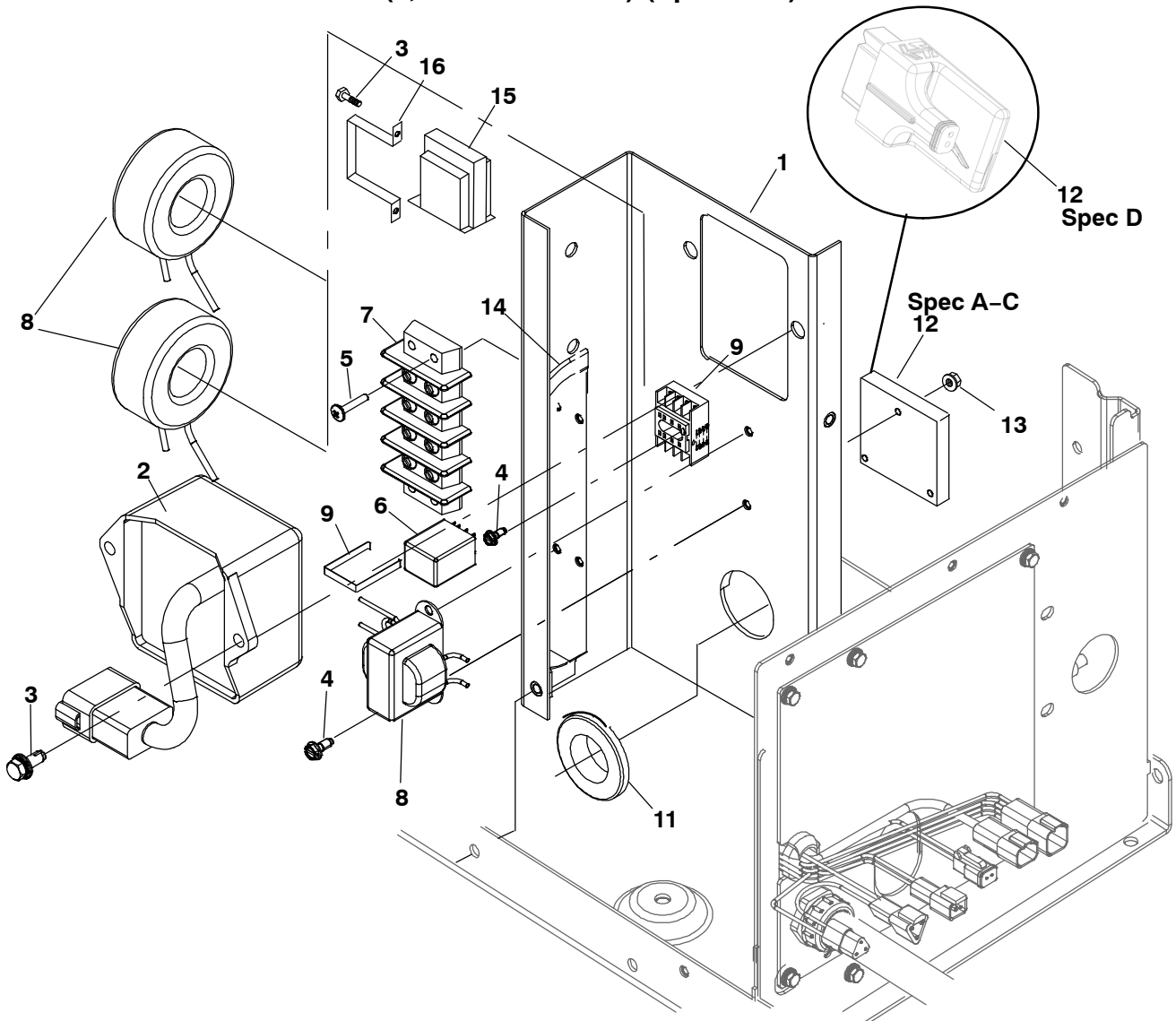
Generator Begin Spec G



Generator Begin Spec G

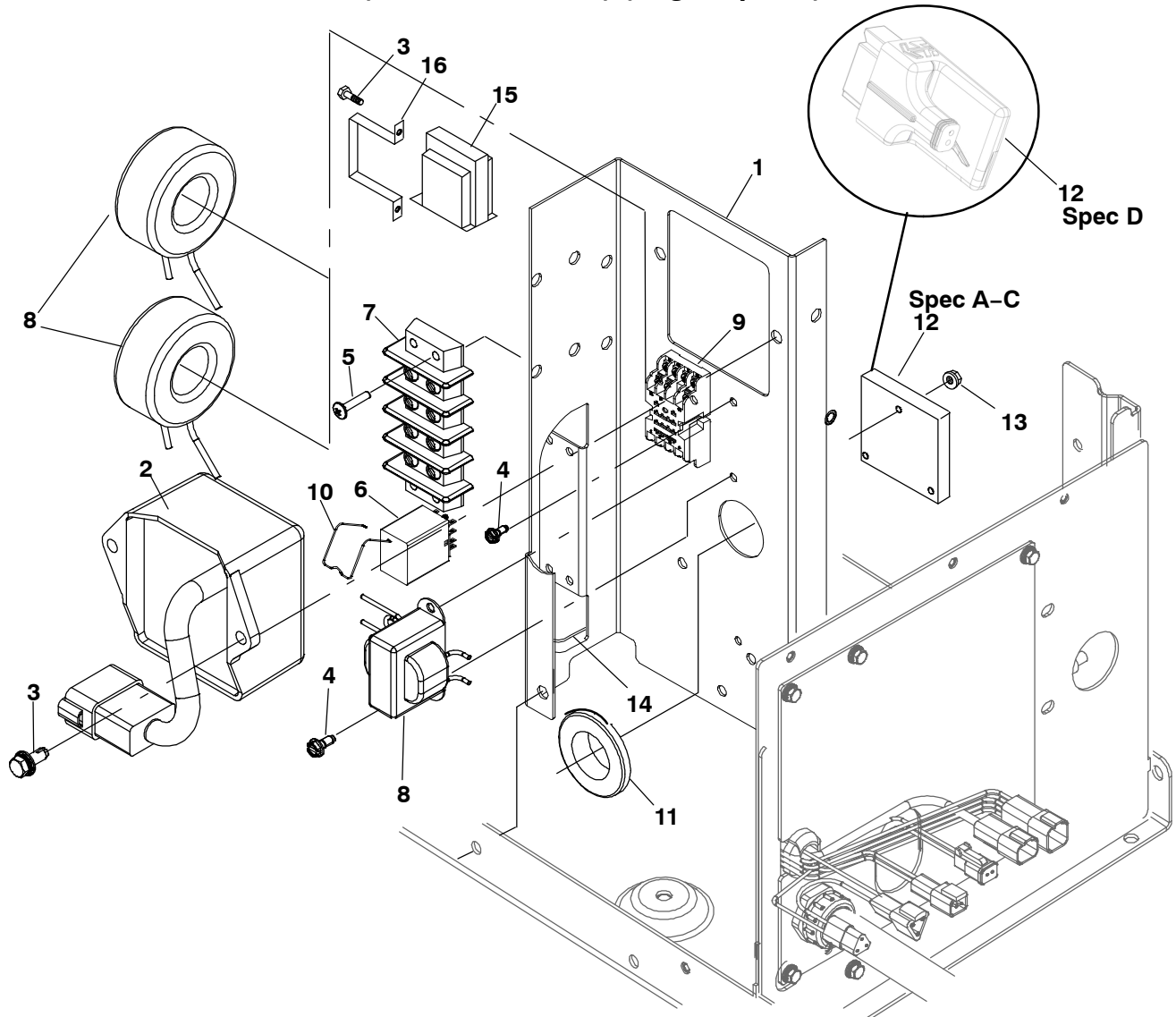
REF NO.	PART NO.	QTY USED	PART DESCRIPTION	REF NO.	PART NO.	QTY USED	PART DESCRIPTION
1	231-0406	1	Adapter, Generator	13	205-0300	1	Fan, Nylon Generator
2	403-4705	1	Eye, Lifting	14	526-0077	1	Washer, Flat (1.25 OD x 15/32 ID)
3	506-0008	1	Spring, Compression	15	800-2091	1	Screw, Hex Head
4		1	Generator	16	130-5611	1	Fan, Steel Generator
	A053T946		6kW and 8kW	17		4	Line, Hydraulic
	A053R212		10kW		501-0986		6kW and 8kW
	A053T958		15kW		501-0967		10kW
5		4	Stud		501-0898		15kW
	520-1032		6kW and 8kW	18	815-0829-04	1	Screw, Hex Flange Head
	520-2642-02		10kW	19	502-1443	1	Adapter, Alternator
	520-2642-03		15kW	20	526-0174	1	Washer, Flat
6	509-0420	1	+O'Ring, Generator	21	725-1078	1	Screw, Socket Head
7	232-4117-02	1	Foot, Generator Mounting	22	212-1303	1	Block Assy, Brush (Includes Parts Marked *)
8	A029W995	1	Endbell, Generator	23	212-1276-03	1	*Spring, Generator Brush
9	508-1265	1	Grommet	24	A053W561	1	*Brush, Generator
10	815-0753	5	Screw, Lock Flanged (M6 x 1 x 14mm)	25	212-1304	1	*Block, Brush
11	526-2080	4	Washer, Flat				
12	860-2007	4	Nut, Hex Head (M6 x 1mm)				

Voltage Regulator Bracket (6, 8kW and 10kW) (Spec A-D)



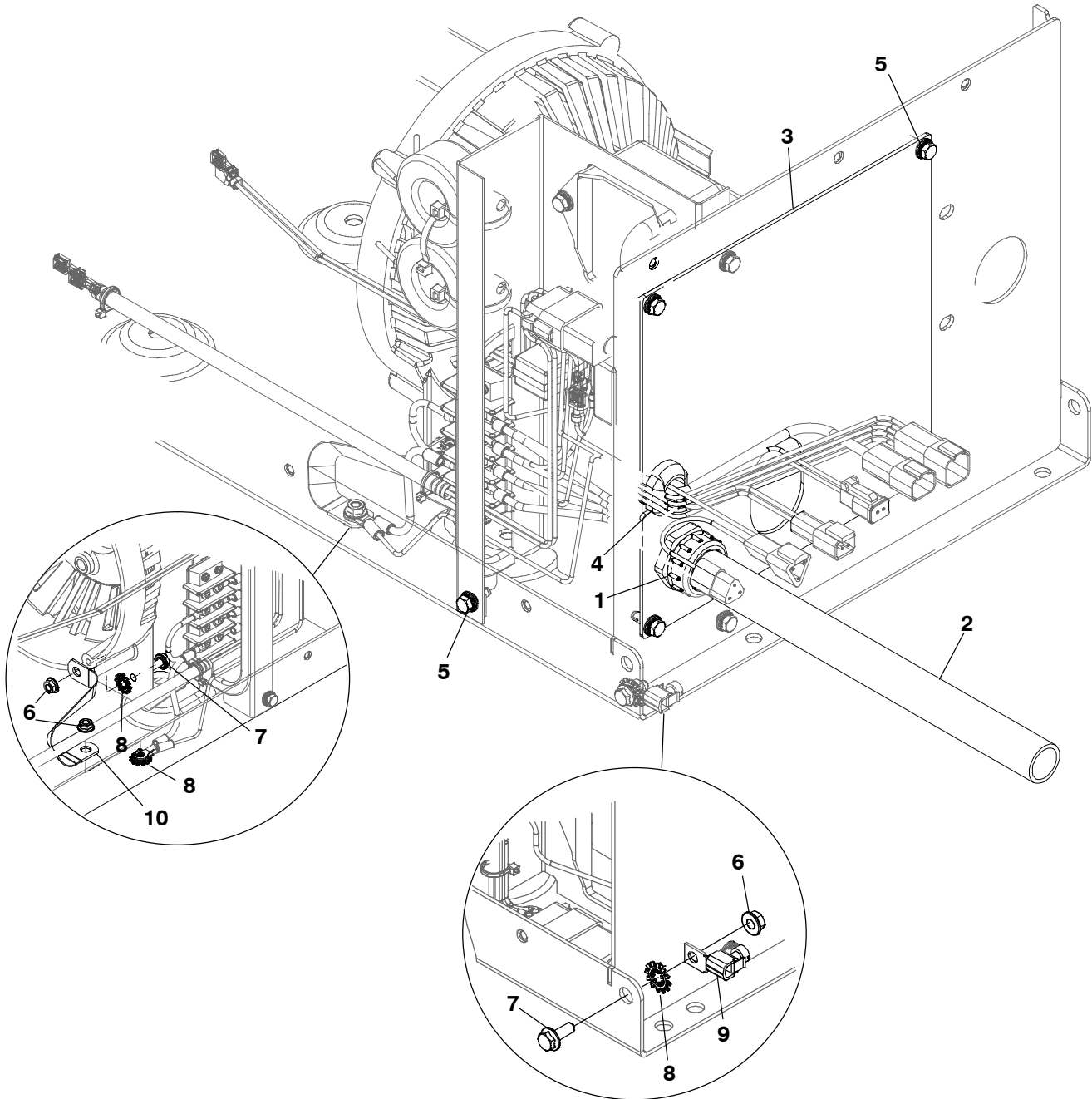
REF NO.	PART NO.	QTY USED	PART DESCRIPTION	REF NO.	PART NO.	QTY USED	PART DESCRIPTION
1	319-6830-02	1	Bracket, Voltage Regulator				6kW, 8kW, 10kW, 60Hz
2	305-0911	1	Regulator, Voltage	300-5977-01	1		(Spec A-C)
	305-0922	1	6kW, 8kW, 10kW, 60Hz	A048S420	1		(Spec D)
	305-0922	1	8kW, 50 Hz	300-5977-02	1		8kW, 50 Hz
3	821-6006-01	4	Screw, Hex Head Sems				(Spec A-C)
			Stainless Steel	A048V458	1		(Spec D)
			(M6 x 1 x 16mm)	321-0441	1		Fuse .125 Amp 250V
4	815-0937	4	Screw, XREC Pan Head				(Replacement)
			(6-32 x .50")	12	166-0770	3	Nut, Hex (M4)
5	815-0651	4	Screw, Phillips RHM	13	508-0210	1	Edging (212mm)
			(#6-32 x .75")	14	315-1732	1	Transformer (Begin Spec B)
6	307-3006	1	Relay (DPDT 120 VAC)	15	315-0882	1	Bracket, Transformer
7	332-0254	1	Block, Terminal (10 Places)				(Begin Spec B)
8	-		Harness, AC Sensor (See				
			Separate Page for				
			Components)				
9	307-3005	1	Base, Relay				
10	508-0117	1	Grommet				
11			Control				

Voltage Regulator Bracket (6, 8kW and 10kW) (Begin Spec F)



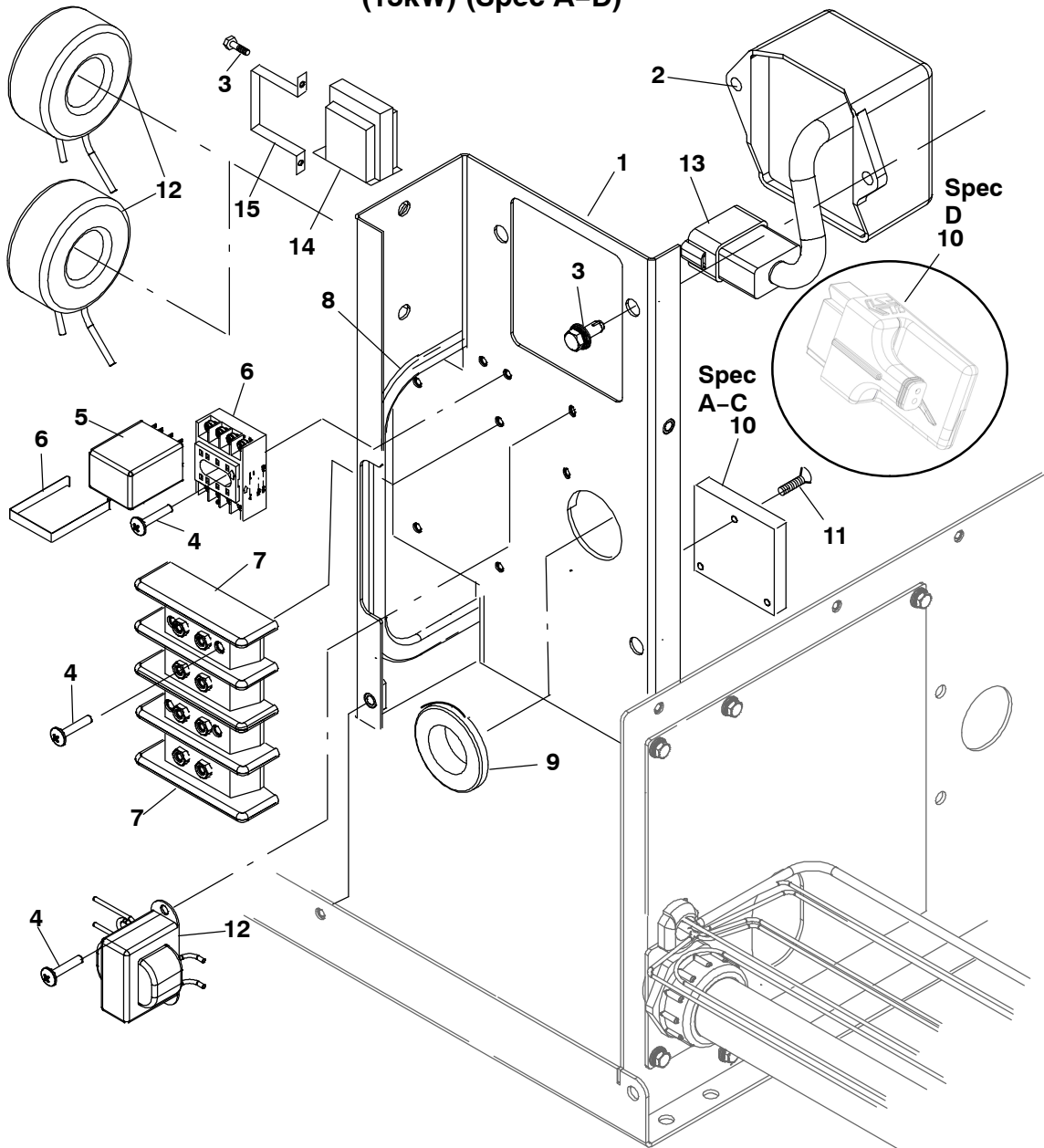
REF NO.	PART NO.	QTY USED	PART DESCRIPTION	REF NO.	PART NO.	QTY USED	PART DESCRIPTION
1	A063D689	1	Bracket, Regulator	10	A063D182	1	Clip
2	305-0911	1	Regulator, Voltage	11	508-0117	1	Grommet
	305-0922	1	6kW, 8kW, 10kW, 60Hz	12			Control
3	821-6006-01	4	Screw, Hex Head Sems				6kW, 8kW, 10kW, 60Hz
			Stainless Steel		300-5977-01	1	(Spec A-C)
			(M6 x 1 x 16mm)		A048S420	1	(Spec D)
4	815-0937	4	Screw, XREC Pan Head		300-5977-02	1	8kW, 50 Hz
			(6-32 x .50")				(Spec A-C)
5	815-0651	4	Screw, Phillips RHM		A048V458	1	(Spec D)
			(#6-32 x .75")		321-0441	1	Fuse .125 Amp 250V
6	A063D179	1	Relay				(Replacement)
7	332-0254	1	Block, Terminal (10 Places)	13	166-0770	3	Nut, Hex (M4)
8	-	1	Harness, AC Sensor (See Separate Page for Components)	14	508-0210	1	Edging (212mm)
9	A063D180	1	Relay, Base	15	315-1732	1	Transformer (Begin Spec B)
				16	315-0882	1	Bracket, Transformer (Begin Spec B)

Side Panel (6 and 8kW and 10kW)



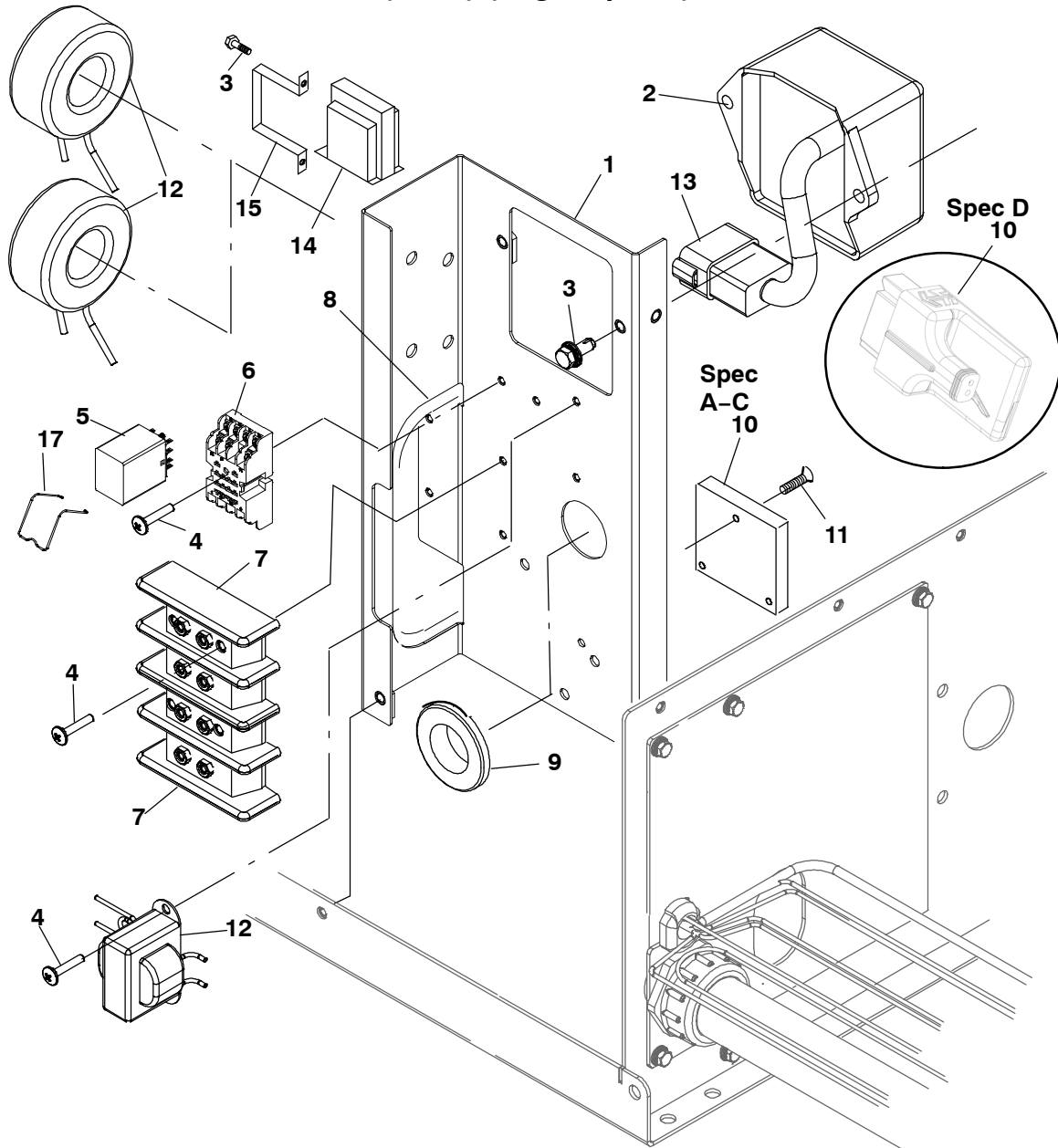
REF NO.	PART NO.	QTY USED	PART DESCRIPTION	REF NO.	PART NO.	QTY USED	PART DESCRIPTION
1	331-0582-01	1	Connector, Conduit	4	323-2062	1	Bushing, Strain Relief
	331-0582-02	1	6, 8kW (60Hz)	5	821-6006-01	7	Screw, Hex Head Sems
			10kW (60Hz)8kW (50Hz)				Stainless (M6 x 16mm)
2	331-0603-01	1	Conduit, Liquidtight	6	870-2054	3	Nut, Flanged Lock (M6 x 1mm)
	331-0604-01	1	6, 8kW (60Hz)	7	821-2033	2	Screw, Flanged Lock
			10kW (60Hz)8kW (50Hz)				(M6 x 1 x 16mm)
3	319-5670-04	1	Cover, Control	8	856-0006	3	Washer, ETIT Lock (1/4")
	319-5670-05	1	6, 8kW (60Hz)	9	332-0142	1	Terminal, Solderless
			10kW (60Hz)8kW (50Hz)	10	337-2845	1	Strap, Bond

Voltage Regulator Bracket (15kW) (Spec A-D)



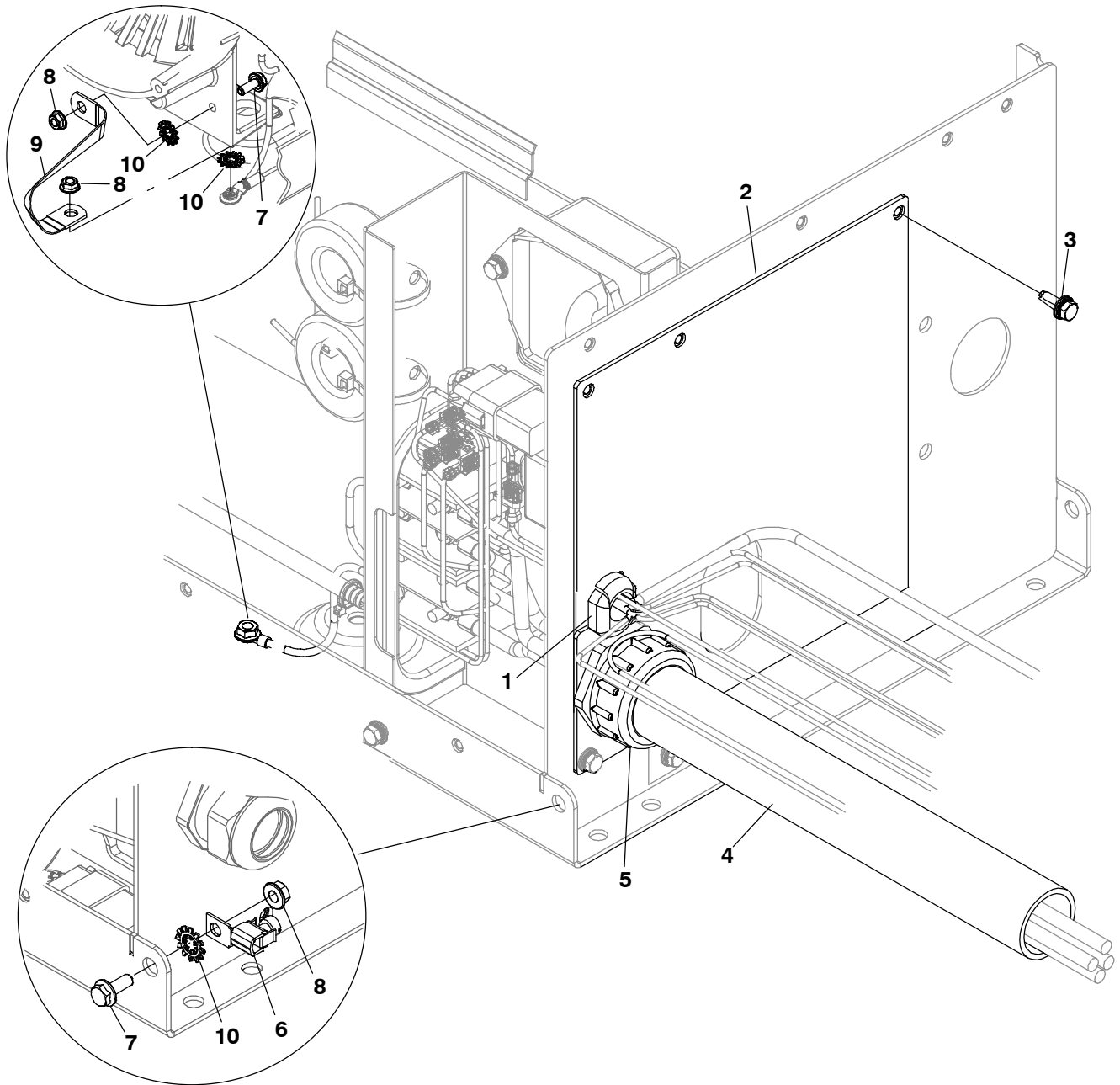
REF NO.	PART NO.	QTY USED	PART DESCRIPTION	REF NO.	PART NO.	QTY USED	PART DESCRIPTION
1	319-6831-02	1	Bracket, Voltage Regulator				
2	305-0911	1	Regulator, Voltage				
3	821-6006-01	4	Screw, Hex Head Sems Stainless Steel (M6 x 1 x 16mm)	11	823-0002-08	3	Screw, Flat Head (Spec A-C) (Begin Spec B Replace)
4	815-0937	8	Screw, Xrec ETIT (#6-32 x .5")	12	-		Harness, AC Sensor (See Separate Page for Components)
5	307-3006	1	Relay	13	-	1	Harness, Regulator (See Separate Page for Components)
6	307-3005	1	Base, Relay	14	315-1732	1	Transformer (Begin Spec B)
7	332-3910	2	Block, Terminal (8 Places)	15	315-0882	1	Bracket, Transformer
8	508-0210	1	Edging (242mm)	16	321-0441	1	Fuse .125 Amp 250V (Begin Spec B Not Shown)
9	508-0117	1	Grommet				
10			Control				
	300-5977-01	1	(Spec A-C)				
	A048S420	1	(Spec D)				
	321-0441	1	Fuse .125 Amp 250V				

Voltage Regulator Bracket (15kW) (Begin Spec F)



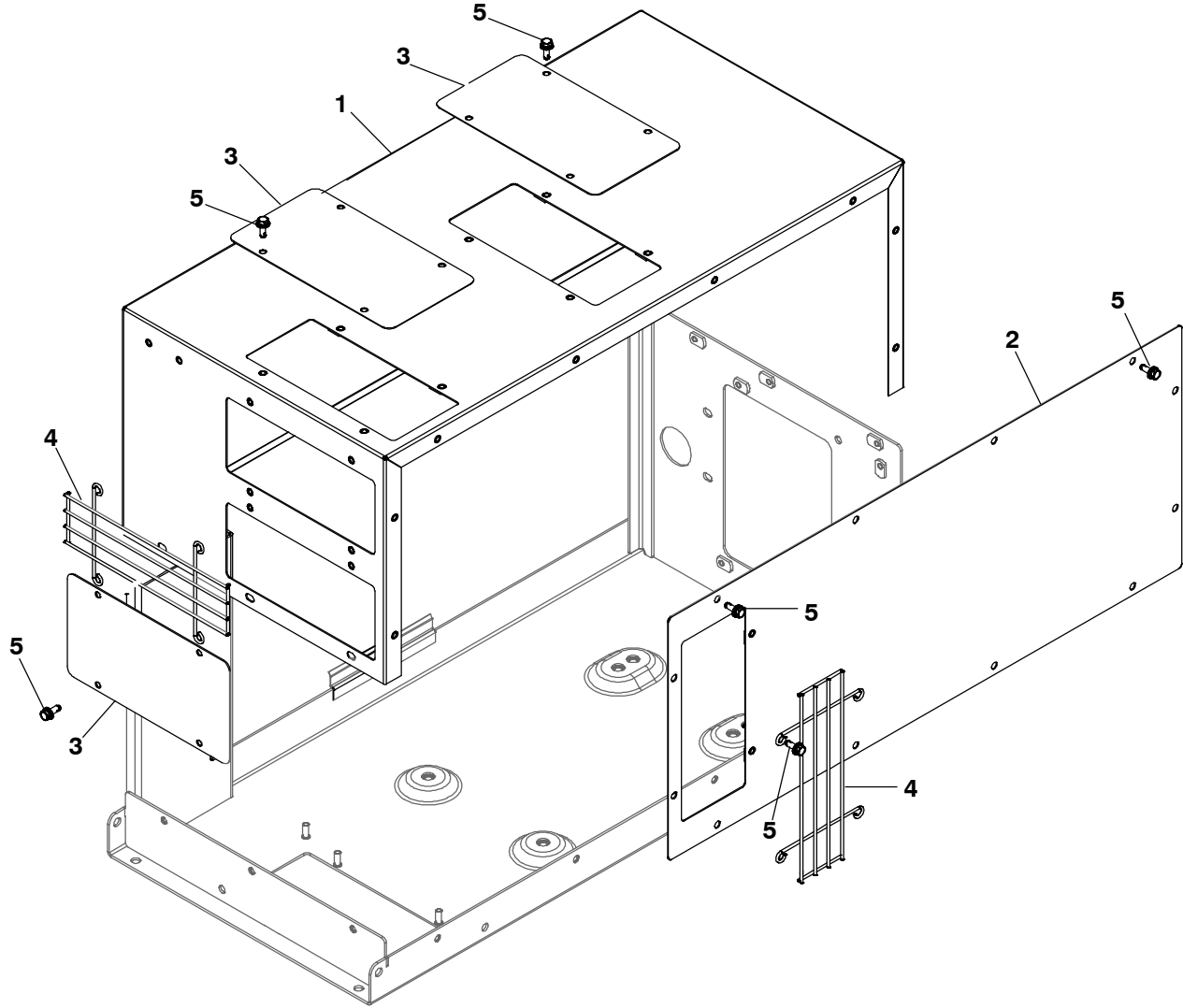
REF NO.	PART NO.	QTY USED	PART DESCRIPTION	REF NO.	PART NO.	QTY USED	PART DESCRIPTION
1	A063D687	1	Bracket, Regulator				
2	305-0911	1	Regulator, Voltage				
3	821-6006-01	4	Screw, Hex Head Sems Stainless Steel (M6 x 1 x 16mm)	321-0441		1	Fuse .125 Amp 250V (Begin Spec B Replace)
4	815-0937	8	Screw, Xrec ETIT (#6-32 x .5")	11	823-0002-08	3	Screw, Flat Head (Spec A-C)
5	A063D179	1	Relay	12	-		Harness, AC Sensor (See Separate Page for Components)
6	A063D180	1	Relay, Base	13	-	1	Harness, Regulator (See Separate Page for Components)
7	332-3910	2	Block, Terminal (8 Places)	14	315-1732	1	Transformer (Begin Spec B)
8	508-0210	1	Edging (242mm)	15	315-0882	1	Bracket, Transformer
9	508-0117	1	Grommet	16	321-0441	1	Fuse .125 Amp 250V (Begin Spec B Not Shown)
10			Control	17	A063D182	1	Clip
	300-5977-01	1	(Spec A-C)				
	A048S420	1	(Spec D)				

Side Panel (15kW)



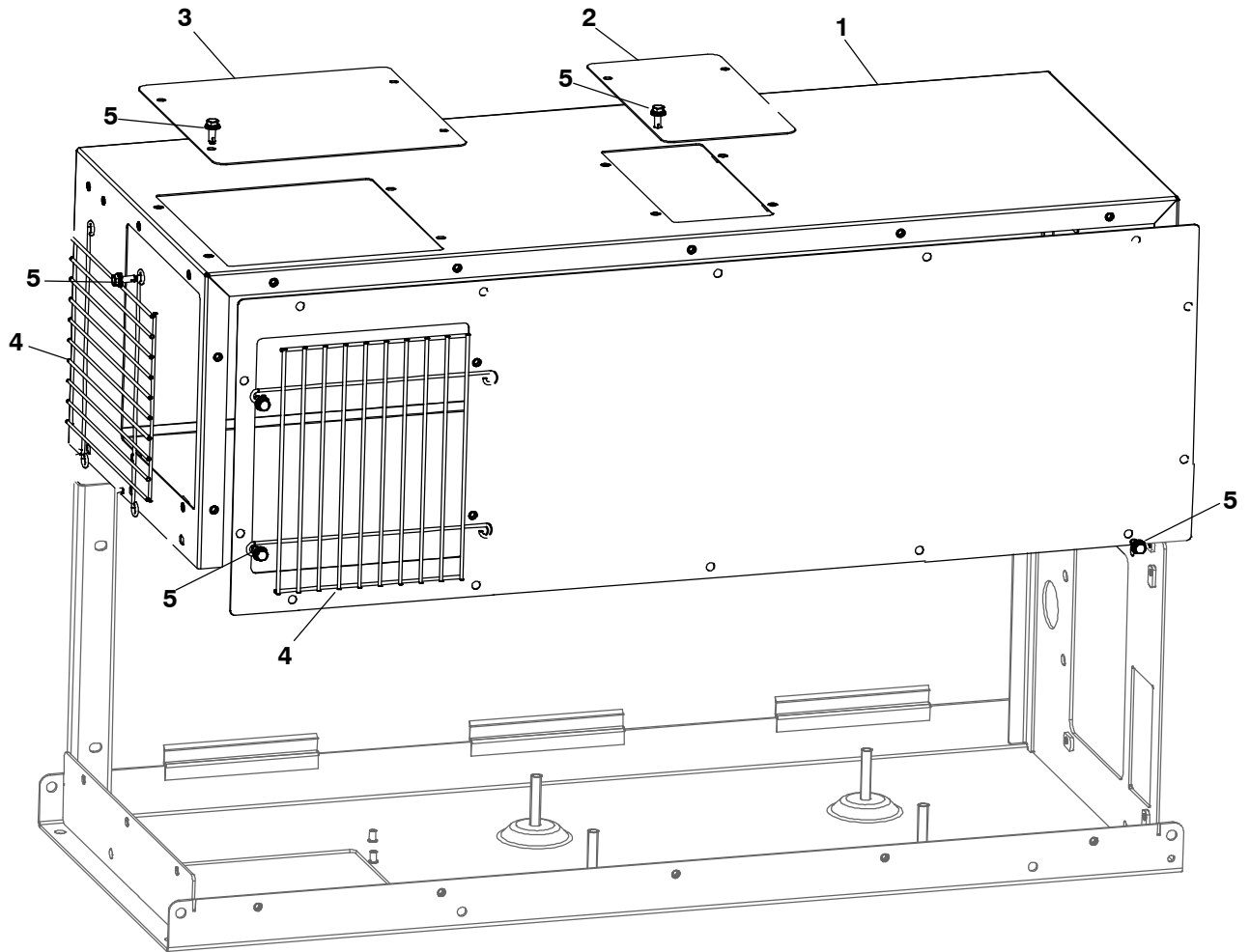
REF NO.	PART NO.	QTY USED	PART DESCRIPTION	REF NO.	PART NO.	QTY USED	PART DESCRIPTION
1	323-2062	1	Relief, Strain	7	821-2033	2	Screw, Locking Flange (M6 x1 x 16mm)
2	319-5760-06	1	Cover, Control	8	870-2054	3	Nut, Flange Locking (M6 x1mm)
3	821-6006-01	7	Screw, Hex Head Sems Stainless (M6 x 0.1 x 16mm)	9	337-2845	1	Strap, Bond
4	331-0581-01	1	Conduit, Liquid Tight	10	856-0006	3	Washer, ETIT Locking (14")
5	331-0582-04	1	Connector, Conduit				
6	332-0142	1	Terminal, Solderless				

Generator Enclosure (6, 8kW and 10kW)



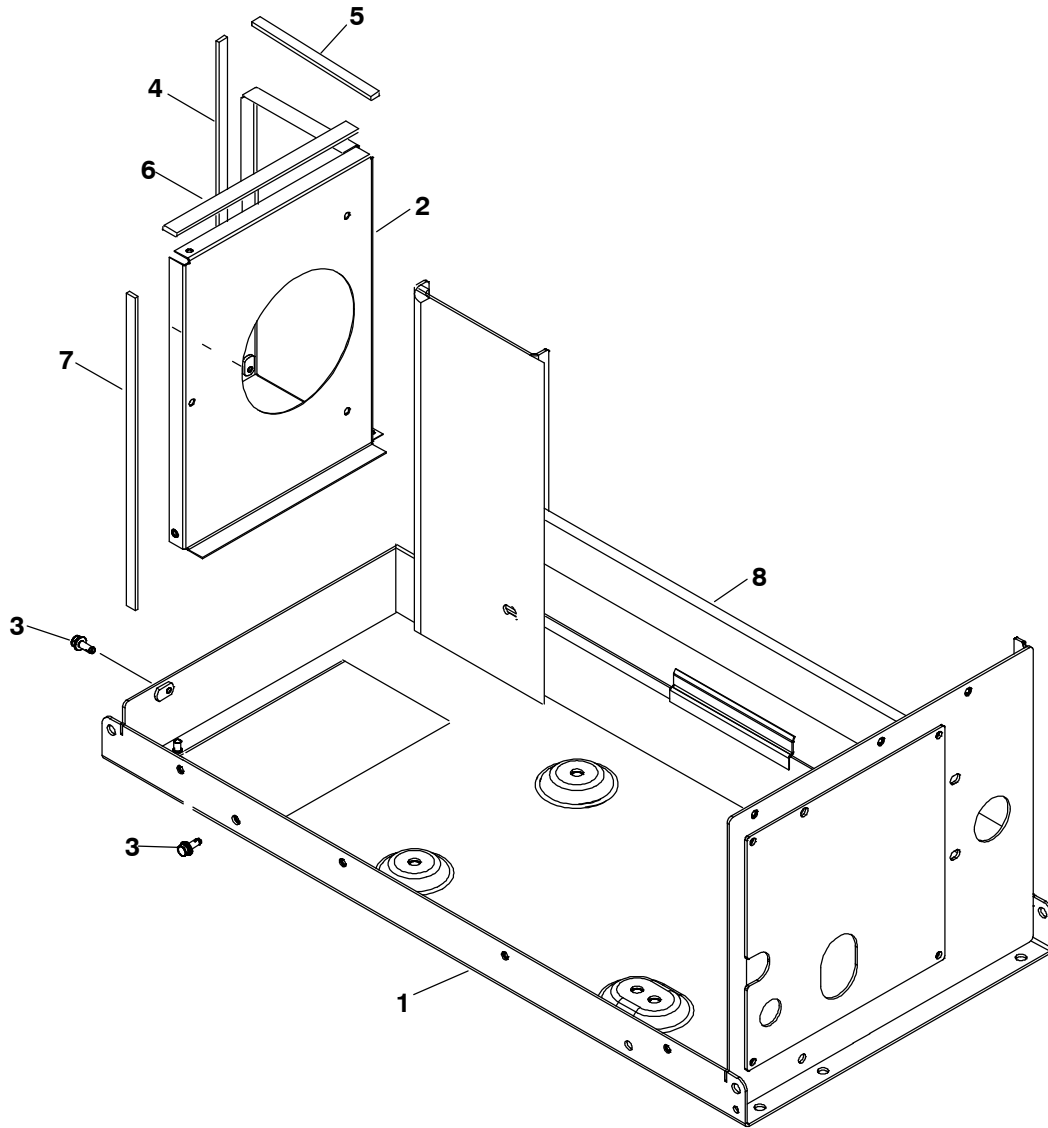
REF NO.	PART NO.	QTY USED	PART DESCRIPTION	REF NO.	PART NO.	QTY USED	PART DESCRIPTION
1	405-9008-02	1	Enclosure, Generator	5	821-6006-01	34	Screw, Hex Head Sems Stainless Steel (M6 x 1 x 16mm)
2	405-9007-02	1	Cover, Enclosure				
3	405-8762-02	3	Cover, Enclosure				
4	234-1013	2	Guard, Generator Fan				

Generator Enclosure (15kW)



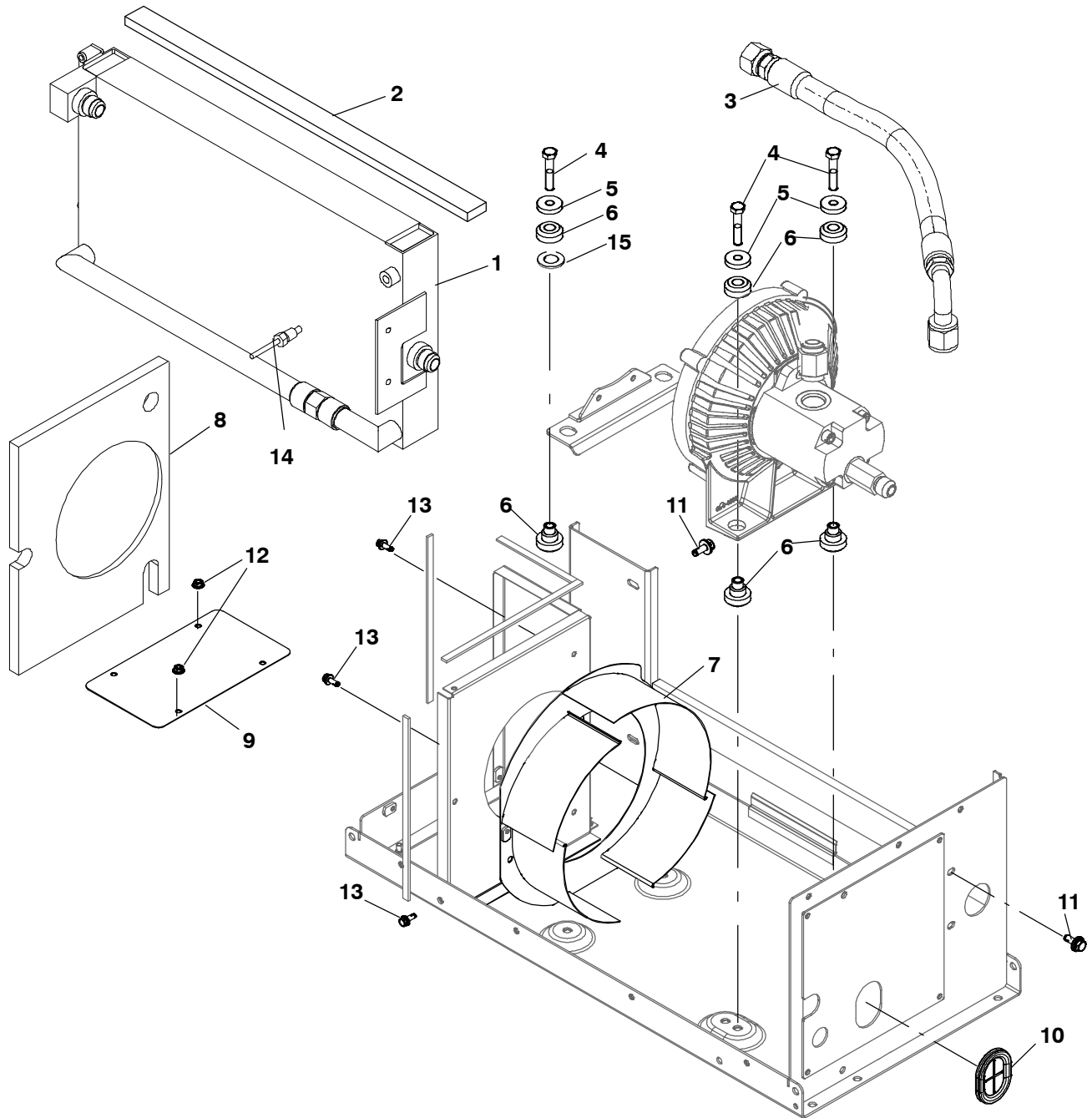
REF NO.	PART NO.	QTY USED	PART DESCRIPTION	REF NO.	PART NO.	QTY USED	PART DESCRIPTION
1	405-9043-02	1	Cover, Enclosure	4	234-1018	2	Guard, Generator Fan
2	405-8762-02	1	Cover, Access	5	821-6006-01	34	Screw, Hex Head Sems Stainless (M6 x 1.0 x16mm)
3	405-9037-02	1	Panel, Enclosure				

Drip Pan Base



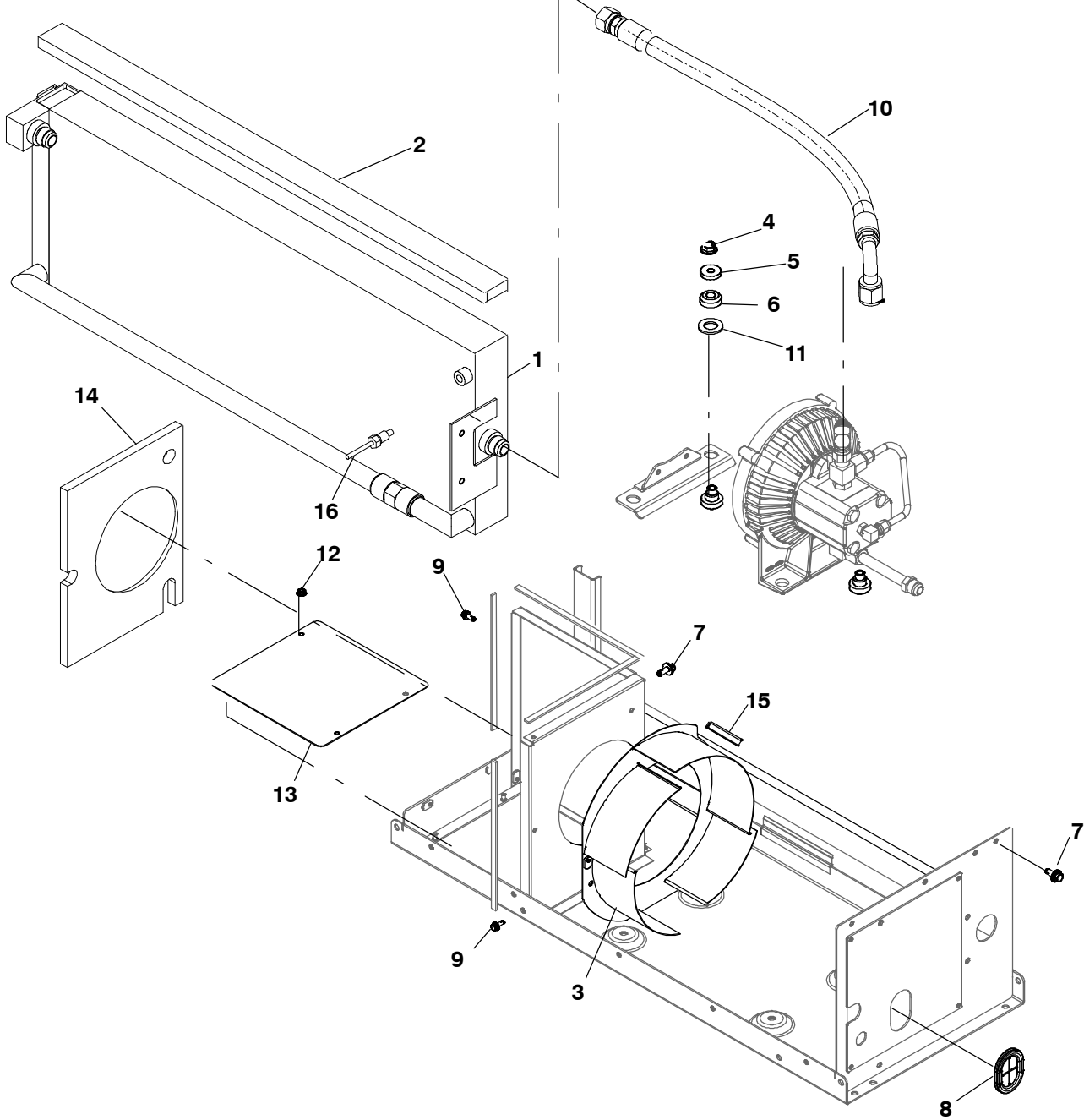
REF NO.	PART NO.	QTY USED	PART DESCRIPTION	REF NO.	PART NO.	QTY USED	PART DESCRIPTION
1			Base, Drip Pan	4	405-7051	1	Seal, Enclosure
	403-5720-02	1	6-10kW	5	405-7052	1	Seal, Enclosure
	403-5945-02	1	15kW		405-7391	1	6-10kW
2			Baffle, Air		405-7053	1	15kW
	405-9032-02	1	6-10kW	6	405-7053	1	Seal, Enclosure
	405-9033-02	1	15kW	7	405-7054	1	Seal, Enclosure
3	821-6006-01	5	Screw, Hex Head Sems	8	405-7570	1	Seal, Enclosure
			Stainless Steel				6-10kW
			(M6 x 1.0 x 16mm)				

Hydraulic Heat Exchanger (6, 8kW and 10kW)



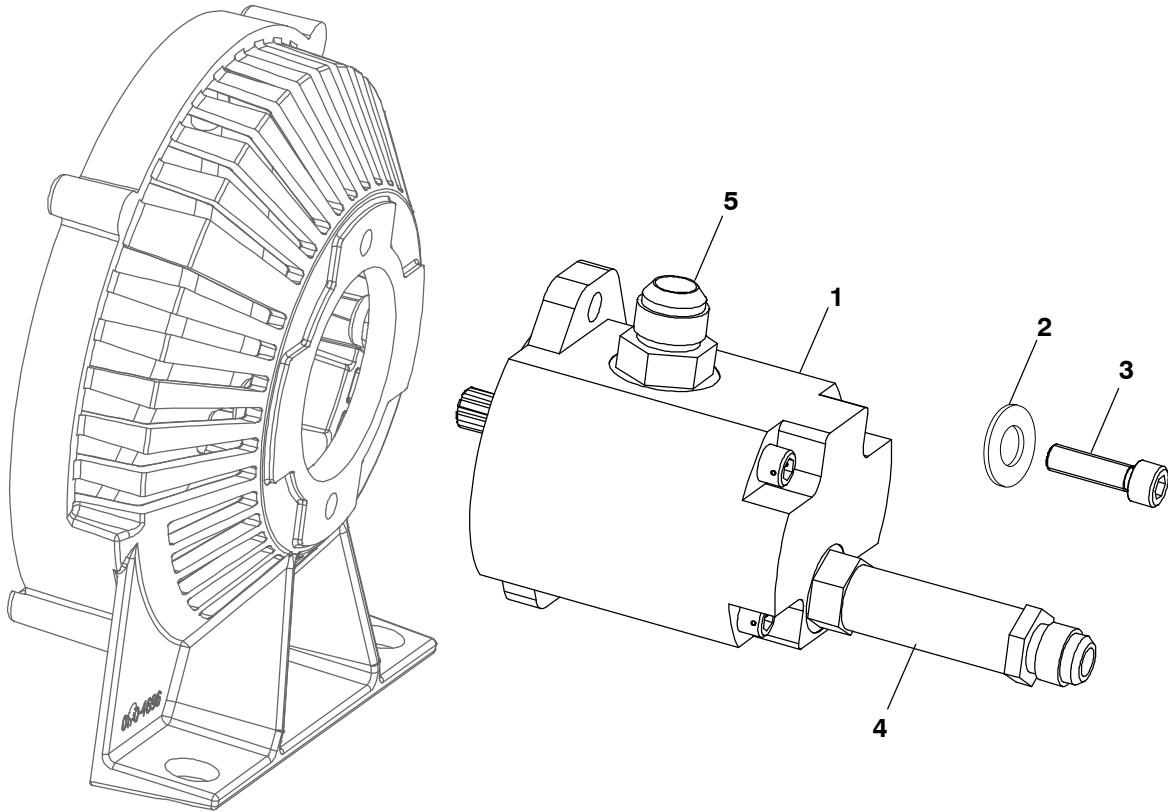
REF NO.	PART NO.	QTY USED	PART DESCRIPTION	REF NO.	PART NO.	QTY USED	PART DESCRIPTION
1	121-0249	1	Exchanger, Hydraulic Heat	9	405-8762-02	1	Cover, Enclosure
2	405-9298	1	Seal, Enclosure	10	508-1116	1	Grommet, Remote
3	503-2567	1	Hose, Oil (Hydraulic)	11	821-6007-02	4	Screw, Hex Head Sems Stainless (M8 x 1.25 x .20mm)
4	800-2091	4	Screw, Hex Head Cap (M10 x 1.5 x .50mm)	12	870-2054	5	Nut, Lock Flange (M6 x 1mm)
5	526-0077	4	Washer, Flat (3/8")	13	821-6006-01	5	Screw, Hex Head Sems Stainless (M6 x 1 x 16mm)
6	402-0771	4	Isolator, Vibration	14	309-0697	1	Switch, Temperature
7	134-5288-02	1	Scroll, Intake	15	526-0027	2	Washer, Flat (3/4")
8	405-9771	1	Insulation, Baffle				

Hydraulic Heat Exchanger (15kW)



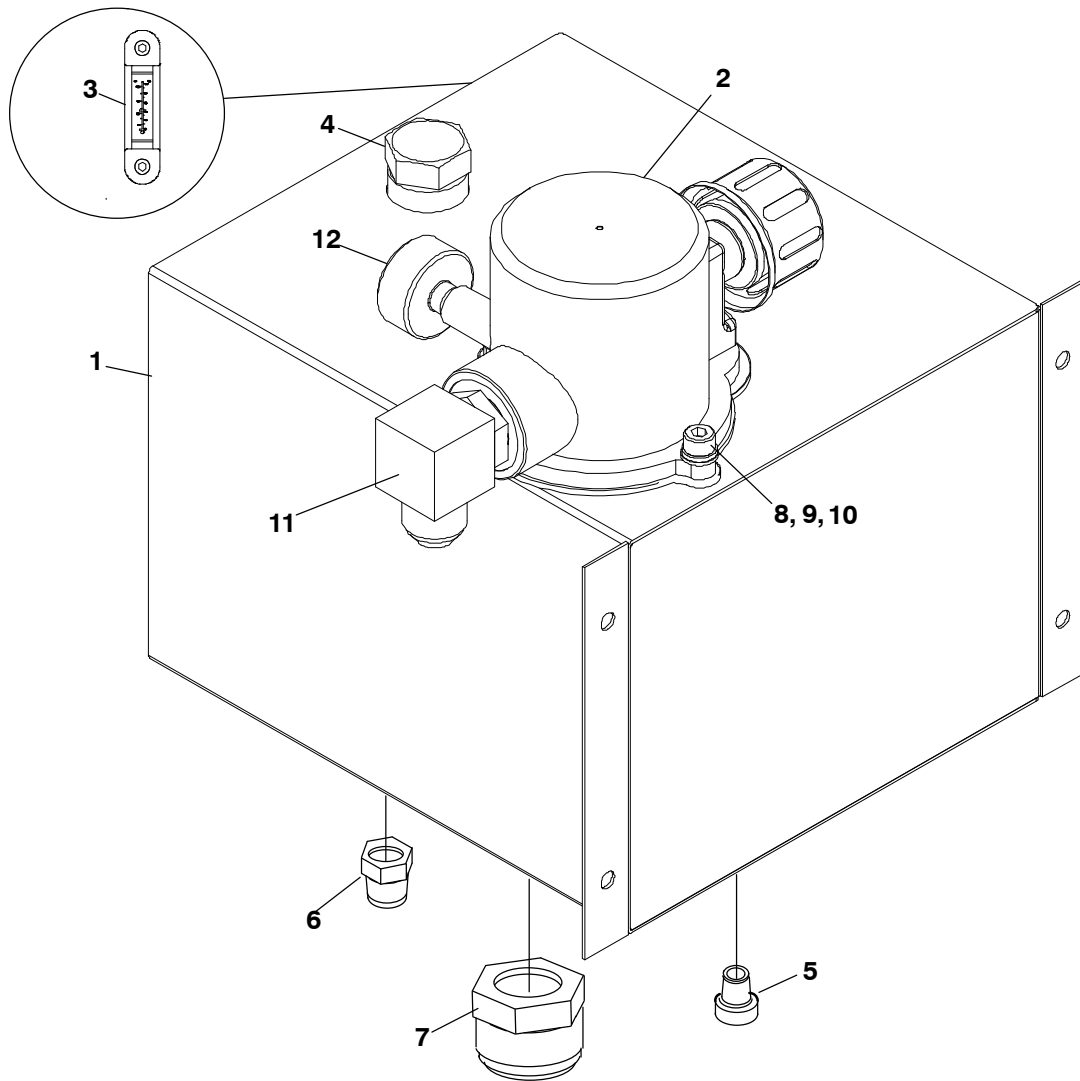
REF NO.	PART NO.	QTY USED	PART DESCRIPTION	REF NO.	PART NO.	QTY USED	PART DESCRIPTION
		1	Package, Hydraulic (Includes Reservoir, Control Hose Motor and Heat Exchange)	9	821-6006-01	5	Screw, Hex Head Sems (M6 x 1.00 x16mm)
1	121-0250	1	Exchanger, Hydraulic Heat	10	503-2599	1	Hose, Oil
2	405-7392	2	Seal, Enclosure	11	526-0027	2	Washer, Flat (3/4")
3	134-5288-02	1	Scroll, Intake	12	870-2054	5	Nut, Locking Flanged Stainless Steel (M6 x 11mm)
4	870-0281	4	Nut, Hex Head Cap Whiz Lock (3/8-16)	13	405-9037-02	1	Cover, Access
5	526-0077	4	Washer, Flat (3/8")	14	405-9771	1	Insulation, Baffle
6	402-0771	4	Isolator, Vibration	15	508-0210	1	Edging
7	821-6007-02	4	Screw, Hex Head Cap (M8 x 1.25 x.20)	16	309-0697	1	Switch, Temperature
8	508-1116	1	Grommet, Remote				

Hydraulic Motor



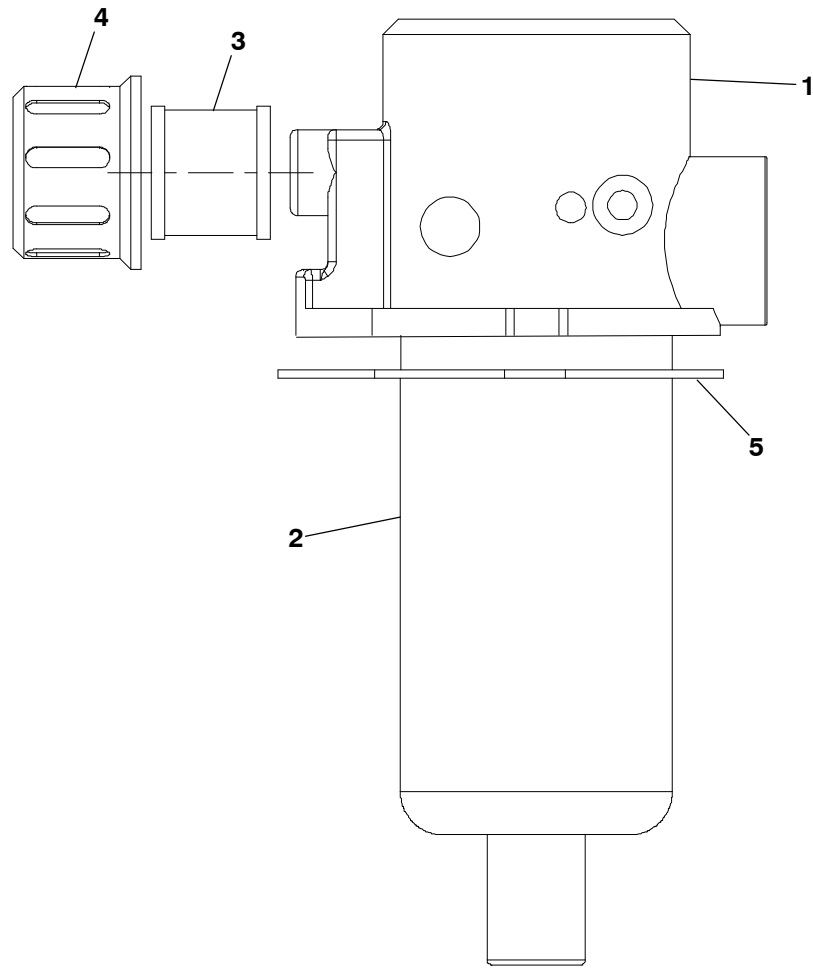
REF NO.	PART NO.	QTY USED	PART DESCRIPTION	REF NO.	PART NO.	QTY USED	PART DESCRIPTION
			Motor Assy, Hydraulic (Spec A)		A048V464	1	15 kW (Spec D, Pulse Pickup motors)
	121-0237	1	6, 8kW and 10 kW Set		2	2	Washer
	121-0245	1	15 kW Set		3	2	Screw, Socket Head Cap (M10 x 1.5 x 40mm)
1			Motor, Hydraulic				Hose, Extension
	121-0260	1	6 and 8kW (Spec A-C) 10 kW (Spec A-C)		4	1	6 and 8 kW 60HzSet
	121-0259	1	15 kW Set (Spec A-C)		501-0967	1	10 kW and 8kW 50Hz Set
	A048V460	1	6, 8, 10 kW (Spec D, Pulse Pickup motors)		501-0898	1	15 kW Set
					5	1	Adapter, Hose

Hydraulic Reservoir



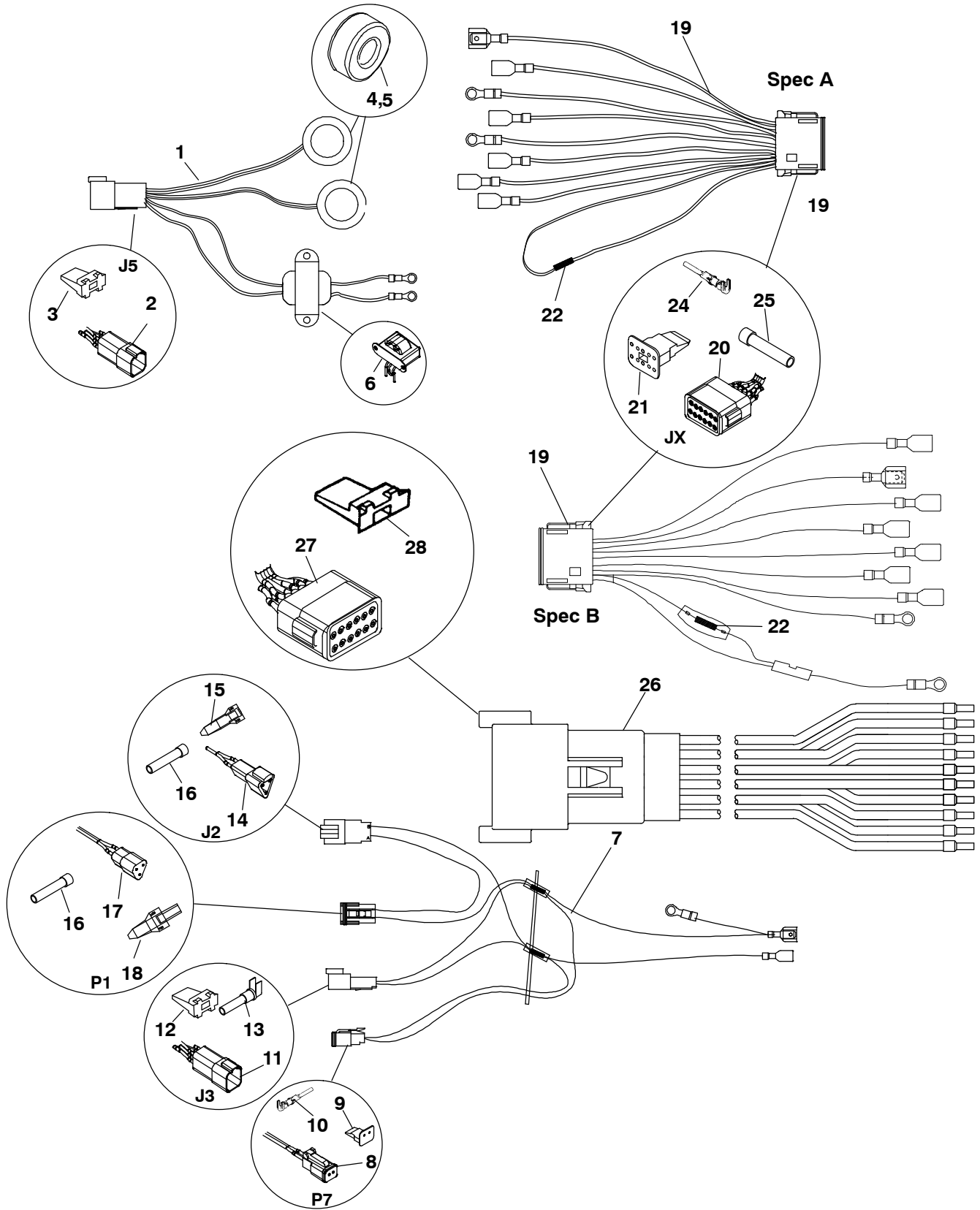
REF NO.	PART NO.	QTY USED	PART DESCRIPTION	REF NO.	PART NO.	QTY USED	PART DESCRIPTION
	121-0242		Reservoir Assy, Hydraulic	7	502-1391	1	Adapter, Hose (1-5/8-12 x 1-5/8 12-37 Flared)
1	121-0243	1	Reservoir, Hydraulic	8	526-0246	1	Washer, Flat
2	-	1	Filter, Hydraulic (See Hydraulic Filter Page)	9	850-0045	1	Washer, Locking
3	193-0581	1	Gauge, Level	10	802-0055	1	Screw, Socket, Head Cap
4	517-0359	1	Plug, Cap	11	502-1470	1	Elbow, Tube
5	517-0360	1	Plug, Drain (9/16-18")	12	193-0587	1	Gauge, Pressure
6	502-1446	1	Adapter, Hose				

Hydraulic Filter



REF NO.	PART NO.	QTY USED	PART DESCRIPTION
1	121-0244	1	Filter Assy, Hydraulic (All Items Included In Assembly)
2	121-0254	1	Filter, Hydraulic
3	121-0253	1	Breather, Reservoir (Element)
4	121-0252	1	Breather, Reservoir (Cover)
5	121-0255	1	Gasket, Hydraulic Reservoir

Harnesses

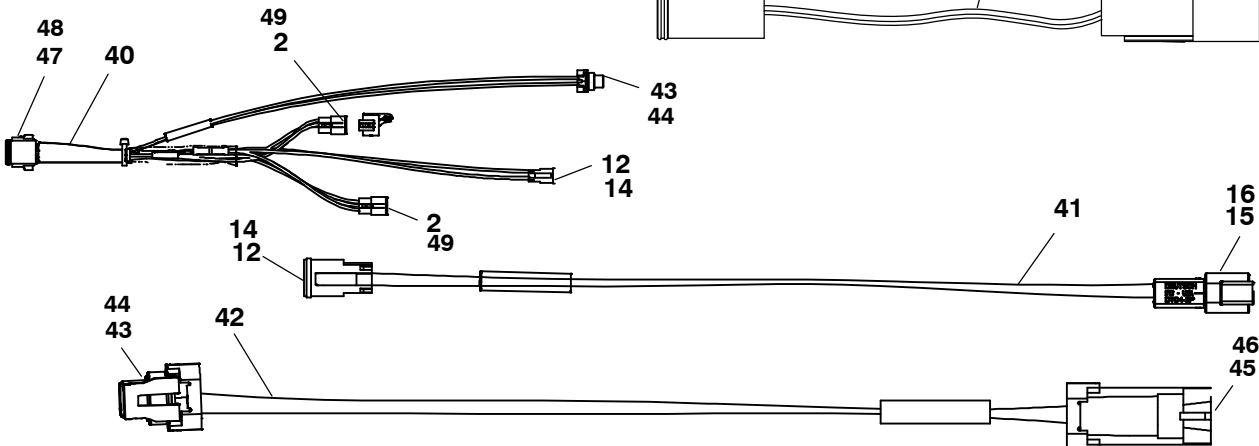
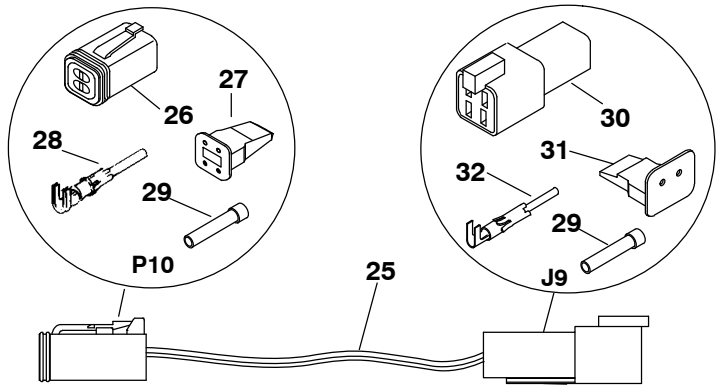
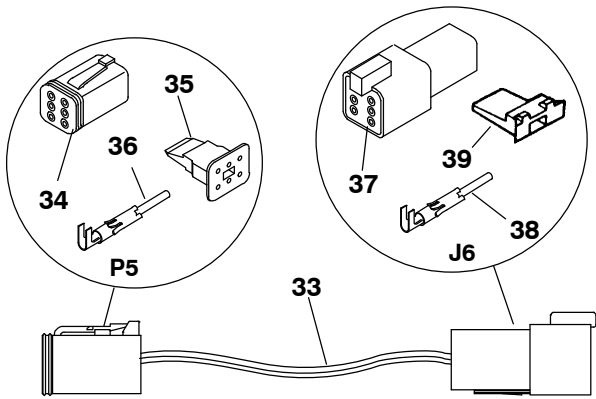
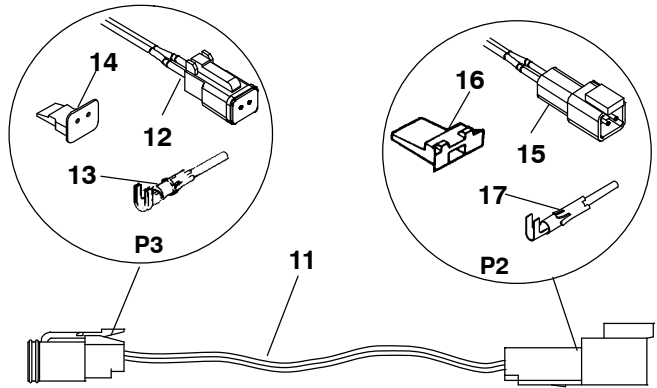
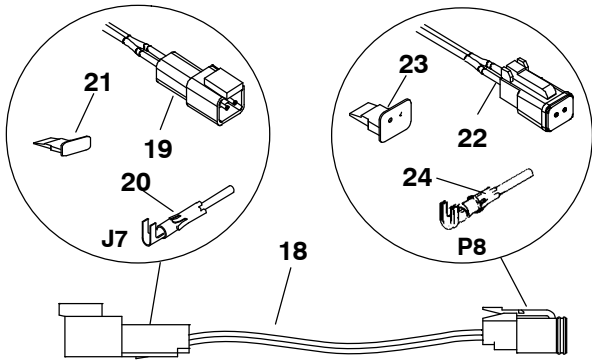
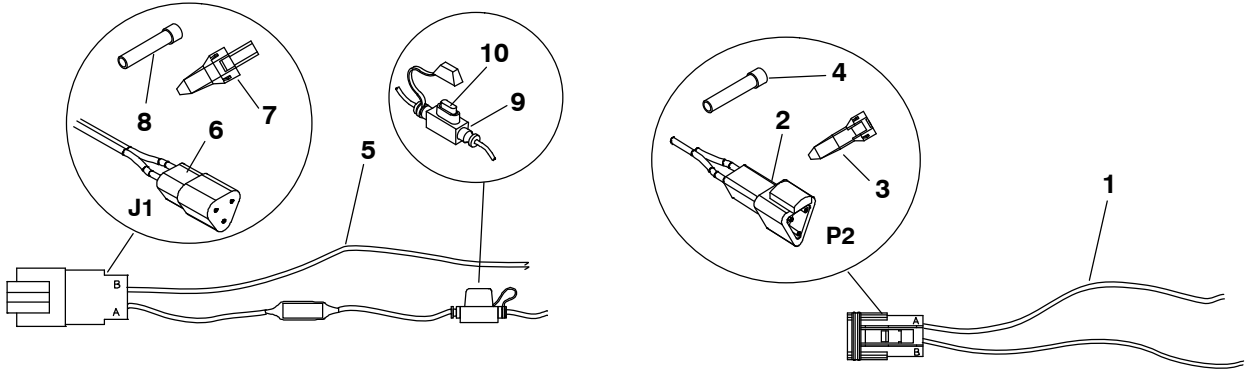


Harnesses

REF NO.	PART NO.	QTY USED	PART DESCRIPTION	REF NO.	PART NO.	QTY USED	PART DESCRIPTION
1	338-4080	1	Harness, AC Sensor (J5) (Includes Parts Marked #)	17	323-1493	1	*Connector, Plug (P1)
2	323-1625	1	#Connector, Receptacle (6 PI)	18	323-1503	1	*Wedge, Plug (P1)
3	323-1626	1	#Wedge, Plug (6 PI)	19			Harness, Regulator (Includes Parts Marked +)
4	315-0855-01	1	#Current, Transformer		338-4337	1	Spec A 50 Hz
5	315-0855-02	1	#Current, Transformer		338-4337-01	1	Spec A 60 Hz
6	315-0854	1	#Transformer, Voltage		338-4980-01	1	Begin Spec B 50 Hz
7	338-4338	1	Harness, DC (Includes Parts Marked *) 6kW (3543B, 2653C, 2282C 4355C and 4356C) 8kW (3544B, 2654C, 2283C, 4357C and 4358C) 10kW (4546, 4547, 2619B and 2655B) 15kW		338-4980-02	1	Begin Spec B 60 Hz
8	323-1504	1	*Socket, Receptacle (P7)	20	323-1582	1	+Socket, Receptacle (12 Pin)
9	323-1500	1	*Wedge, Plug (P7)	21	323-1583	1	+Wedge, Plug (12 Pin)
10	323-1491	2	*Terminal, Pin (P7)	22	351-1596-81	1	+Resistor, 1K Ohm (60Hz)
11	323-1505	1	*Connector, Receptacle (J3)	23	351-1597-12	1	+Resistor, 3.3 K Ohm (50Hz)
12	323-1501	1	*Wedge, Plug (J3)	24	323-1492	2	+Terminal, Socket
13	323-1492	4	*Terminal, Socket (J3)	25	323-1591	1	^+*Plug, Seal
14	323-1494	1	*Connector, Receptacle (J2)	26	338-3104	1	Harness, PCB (Includes Parts Marked ^)
15	323-1502	1	*Wedge, Receptacle (J2)	27	323-1580	1	^Housing, Receptacle (12 Pin)
16	323-1591	1	*Plug, Seal	28	323-1581	1	^Wedge, Receptacle (12 Pin)

- * - Parts Included in Harness, DC
- + - Parts Included in Harness, Regulator
- # - Parts Included in Harness, AC Sensor (J5)
- ^ - Parts Included in Harness, PCB

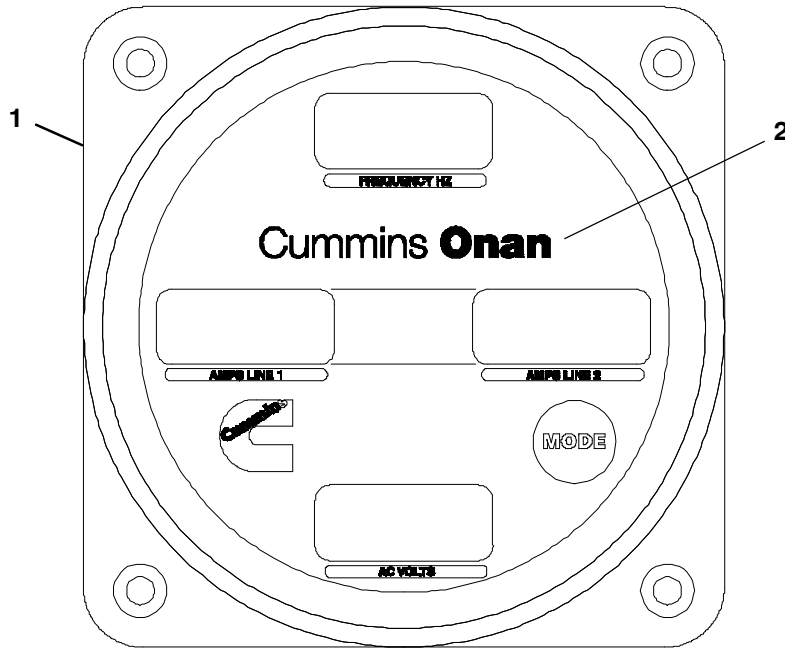
Harnesses



Harnesses

REF NO.	PART NO.	QTY USED	PART DESCRIPTION	REF NO.	PART NO.	QTY USED	PART DESCRIPTION
1	338-4084	1	Harness, Switch (P2) (Includes Parts Marked @)	27	323-1548	1	^Wedge, Plug
2	323-1493	3	@\$Connector, Receptacle (3 Pin)	28	323-1492	3	^Terminal, Socket
3	323-1503	1	@Wedge, Receptacle (3 Pin)	29	323-1591	2	^Plug, Seal
4	323-1591	1	@Plug, Seal	30	323-1549	1	^Connector, Receptacle (4 Pin)
5	338-4085	1	Harness, Switch (J1) (Includes Parts Marked #)	31	323-1547	1	^Wedge, Receptacle
6	323-1494	1	#Connector, Receptacle (3 Pin)	32	323-1491	1	^Terminal, Pin
7	323-1502	1	#Wedge, Receptacle (3 Pin)	33	338-4089	1	Harness, AC Sensor Extension (P5 & J6) (Includes Parts Marked *)
8	323-1591	1	#Plug, Seal	34	323-1623	1	*Connector, Plug (6 Pin)
9	321-0349	1	#Holder, Fuse (Blade)	35	323-1624	1	*Wedge, Plug
10	321-0321-08	1	#Fuse (Blade) 20 Amp	36	323-1492	6	*Terminal, Socket
11	338-4086	1	Harness, Valve (Extension) (P2 & P3) (Includes Parts Marked +)	37	323-1625	1	*Connector, Receptacle (6 Pin)
12			+Connector, Plug (Deutsch)	38	323-1626	1	*Wedge, Receptacle
	323-1504	1	\$ Spec A	39	323-1491	6	*Terminal, Pin
	323-2538	1	! Spec B	40	A048J782	1	Harness, Control (Spec D)
13	323-1492	1	+Terminal, Socket	41	A048N050	1	\$Harness, Control Jumper (Spec D)
14	323-1500	1	+\$!Wedge, Plug	42	A046M769	1	Harness, SP Valve Extension (Spec D)
15		1	+Connector, Receptacle (Deutsch)	43	0323-1884	1	\$\$Connector, Two Pin
	323-1505	1	Spec A	44	0323-1883	1	\$\$Housing, Lock
	323-2539	1	! Spec B	45	0323-1889	1	%Connector
16	323-1501	1	+!Wedge, Receptacle (2 Pin)	46	0323-1890	1	%Housing, Lock
17	323-1491	2	+Terminal, Pin	47	0323-1541	1	\$Plug, Pin
18	338-4087	1	Harness, Meter (Power Extension) (J7 & P8) (Includes Parts Marked ~)	48	0323-1543	1	\$Wedge, Plug
19	323-1505	1	~Connector, Receptacle (2 Pin)	49	A034K955	1	\$Wedge, Plug
20	323-1491	2	~Terminal, Pin				@- Parts Included in Harness, Switch (P2)
21	323-1501	1	~Wedge, Receptacle				# - Parts Included in Harness, Switch (J1)
22	323-1504	1	~Connector, Plug (2 Pin)				+ - Parts Included in Harness, Valve (P2 & P3)
23	323-1500	1	~Wedge, Connector				~ - Parts Included in Harness, Meter (J7 & P8)
24	323-1492	2	~Terminal, Socket				^ - Parts Included in Harness, Sensor (P9 & P10)
25	338-4088	1	Harness, Sensor (J9 & P10) (Temperature Extension) (Includes Parts Marked ^)				* - Parts Included in Harness, AC Sensor (P5 & P6)
26	323-1546	1	^Connector, Plug (4 Pin)				\$ - Parts included in Harness, Control
							! - Parts included in Harness, Control Jumper
							% - Parts included in Harness, SP Valve Extension

Multi-Meter



REF NO.	PART NO.	QTY USED	PART DESCRIPTION
1	302-2106	1	Meter, Multiple Function (Display)
2	98-8854	1	Label, Information

Labels / Kits

REF NO.	PART NO.	QTY USED	PART DESCRIPTION
1	98-8720	1	Label, Logo
2	98-8718	1	Label, Logo
3	98-8765	1	Label, Logo
4	98-6476	1	Label, Ground
5	98-8067	2	Label, Information
6	98-8706-01	1	Label, Information
7	543-0036	1	Label, Package (Includes Caution and Warning Labels)

Numerical Index

<u>Part No.</u>	<u>Page</u>	<u>Part No.</u>	<u>Page</u>	<u>Part No.</u>	<u>Page</u>	<u>Part No.</u>	<u>Page</u>
0323-1541, 37		201-3611-01, 13		321-0441, 20 , 21 , 23 , 24		338-4086, 37	
0323-1543, 37		201-3611-02, 14 , 15		323-1491, 35 , 37		338-4087, 37	
0323-1883, 37		201-3611-03, 16		323-1492, 35 , 37		338-4088, 37	
0323-1884, 37		205-0300, 13 , 14 , 15 , 16 , 19		323-1493, 35 , 37		338-4089, 37	
0323-1889, 37		211-0521, 13 , 14 , 15 , 16		323-1494, 35 , 37		338-4337, 35	
0323-1890, 37		212-1276-03, 13 , 14 , 15 , 16 , 19		323-1500, 35 , 37		338-4337-01, 35	
0502-1412, 11		212-1303, 13 , 14 , 15 , 16 , 19		323-1501, 35 , 37		338-4338, 35	
0502-1468, 11		212-1304, 13 , 14 , 15 , 16 , 19		323-1502, 35 , 37		338-4980-01, 35	
0502-1542, 11		214-0109, 13 , 14 , 15 , 16		323-1503, 35 , 37		338-4980-02, 35	
0502-1543, 11		220-4633-01, 13		323-1504, 35 , 37		351-1596-81, 35	
098-6476, 38		220-4633-02, 16		323-1505, 35 , 37		351-1597-12, 35	
098-8067, 38		220-4633-03, 15		323-1546, 37		402-0771, 29 , 30	
098-8706-01, 38		220-4633-04, 14		323-1547, 37		403-4705, 13 , 14 , 15 , 16 , 19	
098-8718, 38		231-0406, 13 , 14 , 15 , 16 , 19		323-1548, 37		403-5720-02, 28	
098-8720, 38		232-4117-02, 13 , 14 , 15 , 16 , 19		323-1549, 37		403-5945-02, 28	
098-8765, 38		234-1013, 26		323-1580, 35		405-7051, 28	
121-0237, 31		234-1018, 27		323-1581, 35		405-7052, 28	
121-0242, 32		300-5977-01, 20 , 21 , 23 , 24		323-1582, 35		405-7053, 28	
121-0243, 32		300-5977-02, 20 , 21		323-1583, 35		405-7054, 28	
121-0244, 33		302-2106, 38		323-1591, 35 , 37		405-7391, 28	
121-0245, 31		305-0911, 20 , 21 , 23 , 24		323-1623, 37		405-7392, 30	
121-0248-01, 9		305-0922, 20 , 21		323-1624, 37		405-7570, 28	
121-0248-02, 9		307-3005, 20 , 23 , 24		323-1625, 35 , 37		405-8762-02, 26 , 27 , 29	
121-0248-03, 9		307-3006, 20 , 23		323-1626, 35 , 37		405-9007-02, 26	
121-0248-04, 9		309-0697, 29 , 30		323-2062, 22 , 25		405-9008-02, 26	
121-0248-05, 9		315-0854, 35		323-2538, 37		405-9032-02, 28	
121-0248-06, 9		315-0855-01, 35		323-2539, 37		405-9033-02, 28	
121-0249, 29		315-0855-02, 35		331-0581-01, 25		405-9037-02, 27 , 30	
121-0250, 30		315-0882, 20 , 21 , 23 , 24		331-0582-01, 22		405-9043-02, 27	
121-0251, 9		315-1732, 20 , 21 , 23 , 24		331-0582-02, 22		405-9298, 29	
121-0252, 33		319-5670-04, 22		331-0582-04, 25		405-9771, 29 , 30	
121-0253, 33		319-5670-05, 22		331-0603-01, 22		501-0898, 19 , 31	
121-0254, 33		319-5760-06, 25		331-0604-01, 22		501-0967, 19 , 31	
121-0255, 33		319-6830-02, 20		332-0142, 22 , 25		501-0986, 19 , 31	
121-0259, 31		319-6831-02, 23		332-0254, 20 , 21		502-1391, 32	
121-0260, 31		321-0321-08, 37		332-3910, 23 , 24		502-1412, 9	
130-5611, 13 , 14 , 15 , 16 , 19		321-0349, 37		337-2845, 22 , 25		502-1443, 19 , 31	
134-5288-02, 29 , 30				338-3104, 35		502-1446, 9 , 32	
166-0770, 20 , 21				338-4080, 35		502-1468, 9	
193-0581, 32				338-4084, 37		502-1470, 32	
193-0587, 32				338-4085, 37		502-1542, 9	

Numerical Index

<u>Part No.</u>	<u>Page</u>	<u>Part No.</u>	<u>Page</u>	<u>Part No.</u>	<u>Page</u>	<u>Part No.</u>	<u>Page</u>
502-1543,	9	821-6006-01,	20 , 21 , 22 , 23 , 24 , 25 , 26 , 27 , 28 , 29 , 30	A048N050,	37		
503-2567,	29			A048S420,	20 , 21 , 23 , 24		
503-2599,	30	821-6007-02,	29 , 30	A048V458,	20 , 21		
503-2696,	9	823-0002-08,	23 , 24	A048V460,	31		
504-0275,	9	850-0045,	32	A048V464,	31		
504-0276,	9	856-0006,	22 , 25	A048W530,	11		
504-0292,	9	860-2007,	13 , 14 , 15 , 16 , 19	A048X036,	11		
506-0008,	13 , 14 , 15 , 16 , 19	870-0281,	30	A048X038,	11		
508-0117,	20 , 21 , 23 , 24	870-2054,	22 , 25 , 29 , 30	A048X040,	11		
508-0210,	20 , 21 , 23 , 24 , 30	98-8854,	38	A048X042,	11		
508-1116,	29 , 30	A029S283,	11	A048X044,	11		
508-1265,	13 , 14 , 15 , 16 , 19	A029W995,	19	A048Z014,	11		
509-0420,	13 , 14 , 15 , 16 , 19	A029X364,	11	A048Z016,	11		
517-0359,	32	A029X365,	11	A050D699,	12		
517-0360,	32	A029X366,	11	A050D701,	12		
518-0394,	13 , 14 , 15	A029X367,	11	A053R212,	19		
520-1032,	13 , 19	A029X368,	11	A053T946,	19		
520-2642-02,	14 , 15 , 19	A029X369,	11	A053T958,	19		
520-2642-03,	16 , 19	A029Z329,	9	A053W561,	19		
526-0016,	13 , 14 , 15	A029Z330,	9	A063D179,	21 , 24		
526-0027,	29 , 30	A029Z332,	9	A063D180,	21		
526-0077,	13 , 14 , 15 , 16 , 19 , 29 , 30	A029Z334,	9	A063D182,	21 , 24		
526-0174,	19 , 31	A029Z336,	9	A063D687,	24		
526-0246,	32	A029Z337,	9	A063D689,	21		
526-2080,	13 , 14 , 15 , 16 , 19	A034K955,	37				
543-0036,	38	A046L260,	12				
725-1078,	19 , 31	A046L262,	12				
800-2091,	13 , 14 , 15 , 16 , 19 , 29	A046L264,	12				
802-0055,	32	A046L266,	12				
815-0651,	20 , 21	A046L271,	11				
815-0709-01,	14 , 15 , 16	A046M769,	37				
815-0753,	13 , 14 , 15 , 16 , 19	A046P566,	12				
815-0829-04,	13 , 19	A046W958,	11				
815-0937,	20 , 21 , 23 , 24	A046W960,	11				
815-0941-03,	13 , 14 , 15	A046W961,	11				
821-2033,	22 , 25	A046W962,	11				
		A046W963,	11				
		A046W964,	11				
		A047J450,	11				
		A047J451,	11				
		A048J782,	37				

power.cummins.com

Copyright © 2019 Cummins Inc. All rights reserved.

Cummins, Onan, and the "C" logo are registered trademarks of Cummins Inc. and its subsidiaries.

Other company, product, or service names may be trademarks or service marks of others.

Specifications are subject to change without notice.

